

13th April 2015

Catalogue

THE
Monday
Sale

Viewing

Saturday prior between 9.00a.m. and 12.00 noon

Morning of sale from 8.30a.m.

Catalogues are also available from the centre during viewing times.

Timings of the auctions are as follows:

Victoriana and General auction – Saleroom No. 2 – commences at 11.00a.m.

Victoriana and General auction – Saleroom No. 3 – commences at 11.00a.m. – 11.15a.m followed on by Saleroom No. 4.

Poultry, game and rabbits – commences at 10.00a.m.

Produce – commences at 11.00a.m.

CLARKE AND SIMPSON AUCTIONS WELCOME YOU TO THEIR AUCTION CENTRE

Useful Information

Buying at auction can be fun - and can offer good value for money. We are always happy to answer any queries you may have but below we hope we have given a summary which will answer many of the most frequently asked questions. Whilst this guide will be useful to you, please do be aware that full terms and conditions can be found on our website and you should read these before purchasing.

Speed

Depending on the auction, the sale normally proceeds at a rate between 100 and 150 lots per hour.

Payment

Payment is normally expected on the day of the sale other than by special arrangement. Payment can be made in cash (up to a maximum of £12,000 including VAT), debit card, credit card (although there will be surcharge in this regard) or by bank transfer. Where possible, lots should be collected on the same day or following day.

Buyer Registration

We operate a number system for ease and speed and all buyers must register on arrival. Buyers are required to confirm their address and will need to show proof of identity - we suggest driving licence or bank card.

Guide Prices

Guide prices are in no way definitive and they only exist to help buyers gauge likely values. Where items are offered for sale subject to a reserve price, it is our policy to reflect the reserve price at a level no higher than the lower end of the "guide price".

VAT

Lots marked with an asterisk (*) will be sold at the hammer price plus VAT, in addition to the Buyers premium.

Buyers' Premium

All lots purchased are subject to a Buyers' premium at 15% (plus VAT at the standard rate). In addition, purchases online will be subject to an additional surcharge as will items purchased with a credit card.

Electrical Goods

Electrical items are tested to comply with DTI standard for safety. This in no way implies that the item is in working order.

Damaged and Restored Lots

Although damage is noted on some occasions, general imperfections, cracks, chips etc are not stated and it is the responsibility of the purchaser to satisfy themselves of the condition of each lot prior to bidding.

Commission Bids

Potential buyers unable to attend the sale can get involved by leaving a written commission bid. We use every effort to execute these bids, but cannot be responsible for missed bids or lots purchased due to incorrect information.

Auction Centre Opening Hours

The Auction Centre is open for business 8.30am to 4.30pm Monday to Friday and between 9am and 12noon on Saturday and at other times when we have a special sale.

We hope this is helpful to you, please do ask if you have any further queries. We hope you will enjoy attending the sale - please don't be scared, we have never knowingly sold something due to an accidental sneeze so we hope you will not end up with something you do not want.

Lot No	Description
550	A Victorian rosewood and brass inlaid sewing box - key on rostrum
551	An early 20th Century oak smoker's cabinet
552	Six Minton green glazed leaf plates
553	An oak and silver plate mounted three bottle Tantalus
554	A set of six each Aynsley 'Indian Tree' pattern coffee cups and saucers and two Susie Cooper 'Whispering Grass' patterned coffee cups and saucers
555	A late Victorian brass oil lamp with clear glass reservoir
556	An ironstone wash jug and bowl
557	An Edwardian oak and inlaid two hole mantel clock
558	A carved wooden and painted decoy duck
559	A set of six Laura Ashley cranberry glass champagne flutes
560	Three boxes of books #
561	A gilt oval framed wall mirror and a convex wall mirror
562	A Victorian wool work tapestry depicting two figures in a garden setting contained in rosewood frame
563	A WW2 propaganda poster
564	A 19th Century gilt framed wall mirror
565	T Wescott, oil on canvas gilt framed study depicting sailing boats
566	A late Victorian aneroid barometer by Stokes and Watson of Manchester
567	K Curtis, oil on board study depicting a woodland scene with a church in the background
568	John Western, watercolour study depicting Walberswick from Ferry Road
569	A gilt framed oil on board study entitled 'Binding Oats' signed to bottom right corner
570	A gilt framed oil on board study entitled 'Harvest Time' signed to bottom left corner
571	Two Continental school watercolour studies, the first depicting figures in a market, the second of a mountainous landscape
572	A cased set of six silver handled fruit knives; three boxes of silver plated and stainless steel cutlery and five silver plated cake forks
573	A Minton Delft pattern blue and white pedestal bowl and a quantity of cut glass drinking glasses
574	A quantity of Art deco 'Pallissy' hand painted teaware
575	A quantity of glassware to include Vaseline blue glass baskets; green glass bowls; a pair of mottled glass vases etc.

576	A collection of decorative face masks
577	A quantity of various cut glass drinking glasses, vases etc.
578	Three boxes of books #
579	Three boxes of books #
580	A quantity of brassware to include a coal scuttle; a spirit kettle on stand; bellows; horse brasses; jardinières; a chestnut roaster etc.
581	A quantity of silver plated ware to include a three branch candelabra; a pair of spill vases; coasters; ladle; serving spoon etc.
582	A pair of Staffordshire style Spaniels; a Chinese blanc de chine figurine; a Minton 'Flights Of Fantasy' ornament; a Dresden floral encrusted pot pourri; a Capo di Monte figure group etc.
583	A set of four Crown Devon storage jars; a Portmeirion casserole dish; a Mottoware coffee pot and a quantity of T G Green blue and white teaware; sugar sifter etc.
584	A set of six each Royal Doulton 'Yorkshire Rose' tea cups and saucers
585	A brass floral engraved tray; a dolphin ornament; a pottery vase; a pair of carved wooden and painted clogs etc.
586	A quantity of various coloured Art glass vases; an ornament etc.
587	Three boxes of various sundry glass, china etc.
588	Six boxes of books #
589	A Lladro figurine in the form of a ballerina and one other Lladro figure group AF
590	A 1914 button sample book
591	A box containing a carved soapstone rhino ornament; a Japanese black lacquered and gilt decorated box; two 19th Century brass cased seal weights; a glass paperweight; a cloisonné vase etc.
592	A box of costume jewellery
593	A bag containing stamp albums; coins; a shoe horn etc.
594	An old bait box
595	A box containing a Sorrento ware needle case; tatting shuttles and various other sewing items
596	A German bisque headed doll's head and a wax doll's head
597	A bag of postcards
598	A Victorian rosewood sewing box; three postcard albums and contents; loose postcards; a Cannon camera etc.
599	A box containing a painted Ostrich egg; various boxed games; a Cribbage board; small glass animal ornaments; Wade Whimsies etc.
600	A box of Meccano
601	A box of Hornby and Triang model trains

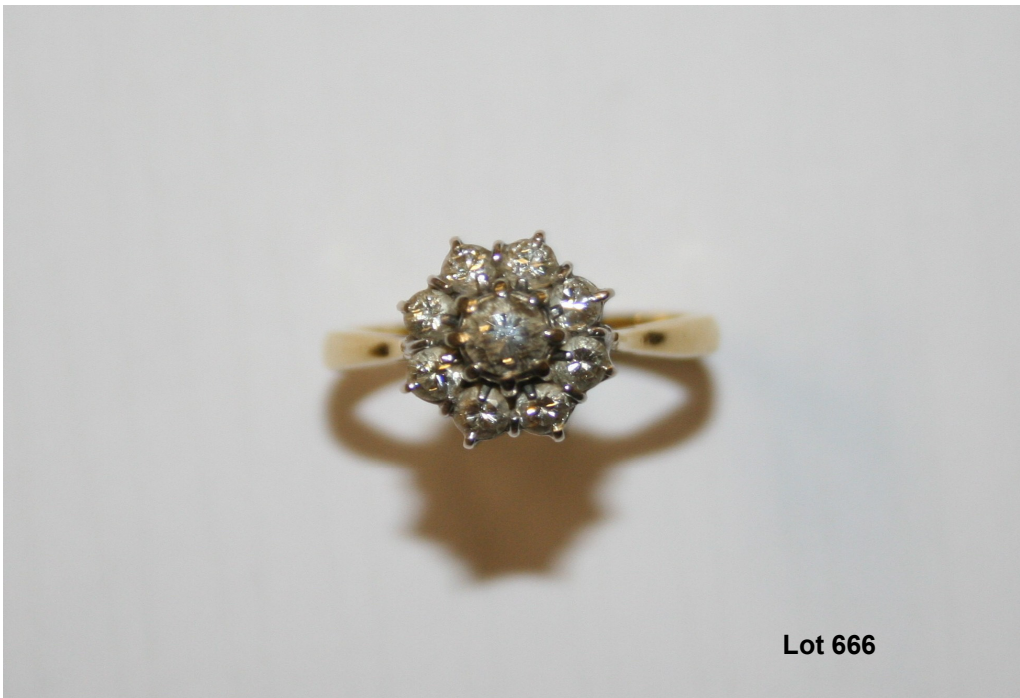
602	Two boxes containing Tonka toys; die-cast model vehicles etc.
603	A postcard album and contents
604	Two miniature Royal Doulton figures 'Good King Wenceslas' and 'Town Crier'
605	Two miniature Royal Doulton figurines 'The Old Balloon Seller' and 'The Balloon Seller'
606	A pair of Staffordshire figures in the form of figures holding parrots
607	Two Indian figures
608	A pair of silver dwarf candlesticks
609	A silver bangle and a silver topped and glass inkwell
610	A modern silver sugar sifter; a silver played toast rack and an Ironstone jug AF
611	A blue pottery cat
612	A set of brass postal scales and weights
613	Three coloured glass drinking glasses
614	A bundle of postcards
615	Three each Chinese blue and white tea bowls and saucers
616	An oil on board study depicting figures on a horse
617	An Art Deco style silver plated three piece cruet set
618	A box containing a corkscrew; a pewter funnel; silver plated cutlery etc.
619	A box of glass decanter and bottle stoppers
620	A box of postcards
621	An album of first day covers
622	An envelope of stamps
623	A quantity of first day covers
624	A bundle of stamps; albums and banknotes
625	A Copplesdorf bisque headed doll with sound box and original hair
626	A Steiff dog and a Steiff style Teddy bear
627	A box of costume jewellery to include bead necklaces; brooches etc.
628	An Ingersoll wrist watch
629	A circular mirror; four compacts and two costume necklaces
630	Six carved ivory needle cases to include five Stanhope examples
631	Seven various needlework items to include Treen bodkin cases; an ivory umbrella etc.
632	A Mauchline ware pin holder and four pin cushions
633	A box containing eight various tape measures
634	A box containing three horn handled carving items etc.
635	A faux tortoiseshell page turned; a hand mirror etc.

636	Two old coins
637	A bag containing four Antique thimbles
638	A box containing two silver serviette rings; a set of four silver spoons etc.
639	A box of wrist watches
640	A box of costume jewellery
641	A box containing a Malachite necklace; a Jade bead necklace set to a yellow metal clasp; a hardstone necklace etc.
642	Two boxes of costume jewellery
643	A 19th Century carved ivory bodkin case with contents
644	A box containing silver jewellery to include a bangle; locket; charm bracelet; a tiger's eye pendant etc.
645	Two silver forks
646	Ten silver and white metal dress rings
647	A box containing a 9ct gold signet ring; a 9ct gold tiger's eye set ring; a carved Cameo brooch contained in 9ct gold mount; a 9ct gold bracelet; an agate set brooch and a 9ct gold necklace
648	A 9ct gold lady's wrist watch; two cocktail watches and a silver red garnet set dress ring
649	An 18ct white gold diamond set ring
650	A box of 9ct gold earrings
651	A 15ct gold swivel fob and two yellow metal chains
652	A 9ct gold half eternity ring set with eighteen diamonds
653	A 22ct gold wedding band
654	A 9ct gold wedding band
655	A 9ct gold blue sapphire and diamond set cluster ring
656	A 9ct gold diamond set ring in the form of a belt buckle
657	An 18ct gold diamond set solitaire ring
658	A 9ct gold Cameo ring
659	A 9ct gold necklace hung with a yellow metal locket
660	A carved Cameo brooch in 9ct gold mount
661	A 9ct gold necklace hung with a 9ct gold floral engraved locket
662	A Rotary 9ct gold lady's wrist watch
663	A 9ct gold foliate engraved locket hung to a yellow metal chain
664	A pair of 9ct gold sapphire set earrings and a pair of 9ct gold cultured pearl set earrings
665	A box containing and 9ct gold bracelet with 9ct gold padlock clasp; five simulated pearl necklaces and a yellow metal costume necklace
666	An 18ct gold diamond cluster ring

Lot 568



Lot 666



Lot 668



667	A 22ct gold wedding band
668	A George V gold sovereign contained in 9ct gold pierced mount
669	A 9ct gold necklace
670	A 9ct gold charm bracelet set with a half sovereign and various 9ct and 14ct gold charms, total weight 71.5g
671	A white painted three drawer bedside chest
672	A pair of Edwardian mahogany spindle back bedroom chairs
673	After Montague Dawson, a coloured print of the Cutty Sark and a coloured print depicting figures by a lake
674	A reproduction yew wood two tier coffee table
675	A domed top stud work trunk
676	A pine plate rack
677	A reproduction mahogany and glazed hi-fi cabinet
678	An early 20th Century mahogany square topped table
679	A collection of pictures, prints and frames
680	A 19th Century mahogany shield shaped dining chair and a woolwork firescreen
681	A Victorian carved oak dining chair
682	A reproduction mahogany record cabinet with contents
683	A mahogany cane seated chair; a walnut cane seated stool; a cane seated hall chair and a small mahogany kettle stand
684	A Harper's Bazaar print on canvas; a coloured print after Jack Vettriano and various other pictures and prints
685	A late Victorian carved mahogany overmantel mirror
686	A gilt metal six branch ceiling light
687	A large black and white portrait print depicting the Reverend Richard Valpy
688	A walnut two door wardrobe
689	A George III mahogany display cabinet raised on cupboard base AF
690	An approximate 7 x 4 red patterned rug
691	An approximate 6 x 4 blue patterned rug
692	An approximate 6 x 5 patterned rug
693	A reproduction mahogany bow front glazed corner cabinet
694	A reproduction walnut corner cabinet
695	An Art Deco walnut two door cupboard
696	A George III mahogany and inlaid four drawer bureau
697	A modern pine two door wardrobe
698	A modern pine two door wardrobe fitted single drawer below

699	A 1930s oak pot cupboard fitted single drawer
700	A modern pine sideboard fitted five drawers
701	A leather cased games compendium with contents of chess set; Cribbage board; dice etc.
702	A quantity of Coalport 'Country Flowers' teaware; Royal Standard white glazed and gilt decorated coffeeware; two Susie Cooper coffee cups etc.
703	A large elm kitchen dresser fitted three drawers
704	A modern pine two door wardrobe fitted three drawers
705	A pine three drawer bedside chest
706	A decorative Victorian religious text
707	A coloured print entitled 'Ships Of The General Steam Navigation Company'
708	Robert Falk, pencil signed print entitled 'Man In A Bowler Hat' and Kate Knight, pencil signed limited edition print contained in gilt frame
709	A quantity of Royal Doulton 'Twilight Rose' and Royal Doulton 'Bloomsbury' patterned dinnerware
710	A stripped pine pedestal writing desk fitted three drawers
711	A box of military equipment to include helmets; hats etc.
712	A set of six Hogarth black and white engravings
713	A stripped pine coffee table fitted single drawer
714	A 1940s oak draw leaf dining table
715	An Edwardian oak luggage stand
716	A large oil on canvas study depicting a street scene contained in gilt frame
717	An Edwardian mahogany and inlaid double bed frame lacking irons
718	A quantity of Royal Doulton 'Berkshire' patterned dinner, tea and coffeeware
719	An elm seated stick back elbow chair
720	A mahogany twin pillar D end extending dining table with one extra leaf
721	Paul Sawer, pencil signed print depicting a Kingfisher
722	A mahogany and box wood strung long cased clock inscribed Matt Wylie of Paisley
723	A Victorian mahogany hall chair
724	A Victorian pine chest of two short over three long drawers raised on bracket feet
725	A quantity of Wedgwood Jasper ware china; a Lladro bird ornament; an Aynsley floral encrusted ornament etc.
726	After Walter Hunt, black and white entitled 'The Dog In The Manger'
727	A large black and white print depicting Highland cattle entitled 'A Summer's Morning'

728	A watercolour study depicting figures fishing by a loch; and one other depicting a mountainous landscape
729	Stephen Mann, watercolour study depicting blue tits
730	Three pencil sketches depicting various birds, initialled R.G.
731	A Winston Churchill Victory plaque
732	A 1930's oak two hole wall clock
733	A 1930's oak two hole wall clock
734	A pastel study depicting Edison lighthouse, contained in gilt frame
735	An 18th Century carved oak mule chest
736	An Italian zither; and a Reliance banjo in carrying case
737	An 18th Century continental pine and oak five drawer chest
738	Two framed coloured plates depicting butterflies
739	A gilt framed watercolour study depicting race horses, signed to bottom right
740	A gilt framed convex wall mirror
741	An oil on canvas study depicting a house by a river, initialled R.R.S.
742	An oil on canvas study depicting figures outside a country house contained in gilt frame, initialled R.R.S.
743	F Maynard, watercolour study of a fishing boat
744	A bevel edged oblong wall mirror
745	A 19th Century rosewood banjo barometer
746	A Chinese carved camphor wood chest
747	A Victorian mahogany chest of two short over three long drawers
748	A Panda floral decorated vase; and similar jardinière
749	A stoneware hand painted golfing figure
750	Two boxes of books #
751	A French style mirrored top dressing table
752	A mahogany swing framed mirror
753	A mahogany swing framed mirror
754	A silver plated seven bottle cruet stand
755	A good quality oak side cupboard fitted single drawer
756	A carved wooden ornament in the form of a fisherman; various blue and white china; a pair of wooden shoe trees; soda syphon; four section glass decanter etc.
757	A copper and brass bin; a brass trivet stand; a pair of bookends in the form of sailing ships; fire poker etc.
758	An ornate brass coal bin; and a companion set

759	Two suitcases and contents of pictures, prints, sewing items, and sundries
760	An oak four drawer filing chest
761	An Alstons five drawer chest
762	Four elm seated spindle back kitchen chairs
763	A set of four beech spindle back dining chairs
764	A reproduction mahogany hi-fi cabinet
765	A reproduction mahogany two drawer filing cabinet
766	An oak square topped table raised on barley twist supports
767	An Edwardian mahogany window table; two standard lamps; and a mahogany firescreen
768	A teak five drawer chest; and matching dressing table
769	A pine bench
770	An approx. 7ft oak pew
771	Two reproduction mahogany magazine racks; a similar drop leaf table; and an oblong coffee table
772	A reproduction mahogany extending dining table and a set of six shield shaped chairs to include two carvers
773	A reproduction mahogany side table with green leather inset top fitted two drawers
774	An octagonal glass topped dining table raised on chrome base
775	A quantity of commemorative mugs and tankards; two dog figures; and various ornaments
776	A box of various china
777	An elm kitchen table with a set of four rush seated dining chairs
778	A Smiths three hole mantel clock; various pewter and metalware etc.
779	An Aynsley "Pembroke" patterned jug; a quantity of white glazed dinner plates and bowls; dressing table set etc.
780	Four boxes containing various sundry china, wooden trays etc.
781	An oak refectory style dining table with a set of four chairs
782	A mahogany oblong coffee table raised on cabriole supports
783	A volume of photographs illustrating "Colliery Activities"
784	A reproduction mahogany extending dining table
785	Four Villeroy & Boch collector's plates; an Indian Tree patterned basket; a pair of floral encrusted vases; a creamware jug; and seven Noritake "Katrina" patterned dinner plates

786	Four Royal Doulton collector's plates; a Royal Doulton sugar bowl; two pairs of twin handled vases; a Davenport vase; two mugs and a tureen
787	A quantity of various drinking glasses
788	A quantity of various Studio pottery; stoneware jugs etc.
789	A quantity of drinking glasses; and two crystal glass candlesticks
790	Eight Bing & Grondahl Christmas plates
791	Two boxes containing various sundries, books, trays, glassware etc.
792	Two boxes of Antique Reference books #
793	Three painted ship plaques
794	Two Poole "Twin Tone" teacups and saucers; Royal Worcester dinner plates; a small Poole pottery dish etc.
795	A quantity of various silver platedware to include spill vase, basket, teapot, candlesticks etc.
796	A quantity of Jersey pottery vases; Sylvac vases etc.
797	An oak gate leg table
798	A Union Jack flag; and a bag of bunting
799	A set of four oak dining chairs
800	An oak framed tile; a small coloured print depicting Ipswich and the Church of St Lawrence; a framed black and white photograph; and two other coloured prints entitled "Beau Maris" and "Hawarden Castle"
801	An oak single drawer side table
802	A glass decanter and stopper; and a brass oil lamp
803	An oak three tier bookcase
804	A cased set of Castella picture cards; Punch advertising poster; a black and white photographic print; and an oil on canvas study, depicting a shoreline
805	A set of four mahogany slat back dining chairs
806	A pair of pine bedside cupboards fitted single drawers
807	A quantity of Giles annuals; a Kodak trimming board; a baby pram rocker etc.
808	A bundle of walking sticks, umbrellas and parasols
809	An approx. 7ft oak pew
810	Six oak barley twist dining chairs
811	A box of vintage clothing
812	An Oriental silkwork embroidery depicting exotic birds; R Freer, oil study depicting a harbour scene; a photographic print etc.
813	A 19th Century oak drop leaf table

814	A brass spark guard
815	A painted bedside cupboard fitted single drawer
816	A Victorian painted towel rail; and a Victorian walnut dining chair
817	A loom ottoman and contents of fabric, blankets etc.
818	Two boxes of books relating to cricket and antiques
819	An oak geometric sideboard fitted two drawers and raised on barley twist supports
820	A quantity of Noritake teaware; a Greek two handled vase and a floral decorated cake stand
821	An Edwardian mahogany envelope card table fitted single drawer
822	A pair of oak bedside tables fitted single drawer
823	A Victorian mahogany chest of two short over three long drawers
824	A Victorian mahogany swing frame mirror
825	A box of glass salts
826	A pine six drawer dressing table and mirror
827	Two model dogs and a cat
828	A pine three drawer chest and pine swing mirror
829	An Ironstone blue and white watering can; a pair of Delft style vases and a cut glass scent bottle
830	A pine two door side cupboard
831	An oak swing frame mirror raised on single box drawer base
832	A brass anniversary clock under dome
833	A Gothic revival carved oak single drawer side table
834	A modern pine chest of two short over four drawers
835	Two brass and glass oil lamps and a glass shade
836	An Edwardian mahogany and inlaid sideboard fitted two drawers
837	A blue leather hat box
838	A quantity of Royal Albert 'Tahiti' pattern teaware
839	An Empire Works floral decorated bowl
840	A pine square topped coffee table
841	A mahogany circular top plant stand with lift up top
842	A pine display table
843	A G plan teak nest of three occasional tables
844	An early 20th Century mahogany piano stool
845	A reproduction mahogany bookcase
846	An oak circular top two tier coffee table
847	A good quality oak nest of three occasional tables
848	A mahogany three tier folding cake stand



Lot 670



Lot 691



Lot 716

849	A reproduction mahogany drop leaf table
850	A Victorian mahogany marble top pot cupboard
851	A Victorian bobbin turned Prie-dieu chair
852	A pair of 19th Century mahogany slat back dining chairs
853	A pine circular top dining table with painted base
854	A pine tilt top dining table
855	Three boxes containing sundries; linen; sewing items etc.
856	A stripped pine kitchen table
857	A set of three floral decorated graduating meat plates; a large soup tureen and cover; various coffeeware; teaware etc.
858	A late Victorian oak extending dining table with one extra leaf
859	A reproduction yew wood square top coffee table
860	George P Lyne, watercolour study depicting harvest time with figures and stooks of corn, signed and dated 1887
861	Four boxes of various sundry china; glass; wooden ware; kitchenalia etc.
862	A Heals dining table
863	A blue and white 'Willow' pattern meat plate; various etched glass shades and an onyx elephant ornament; a floral decorated teapot; table lamps and various other decorative china
864	Three boxes of various sundry china; a marble pastry board etc.
865	Three boxes of vintage clothing; handbags etc.
866	A box of thimbles; evening gloves; a dressing table set; sewing items etc.
867	A large Portuguese pottery wall plate; five Continental pottery bowls and covers; egg tureens; rice bowls etc.
868	A collection of decorative vases to include Wedgwood examples; a Chinese adapted table lamp etc.
869	A quantity of decorative dinner plates; cabbage leaf plates etc.
870	A mahogany smoker's bow spindle back elbow chair
871	Two Victorian dining chairs; a cabriole stool and a magazine rack
872	A pair of floral upholstered shaped back tub chairs
873	A quantity of pictures, prints and watercolours
874	A mahogany slat back rocking chair
875	A late Victorian carved mahogany tub chair
876	A late Victorian floral upholstered button back armchair
877	An upholstered drop end settee

878	An approximate 5 x 2.5 red patterned rug
879	A John Broadwood and Sons rosewood grand piano
880	An approximate 2.5 x 2.5 patterned rug decorated with animals and exotic birds
881	A mahogany cased boudoir grand piano by Schiedmayer of Paris
882	An upholstered two seater drop end settee
883	An Ercol upholstered three piece suite comprising a two seater settee and two matching armchairs
884	A modern pine chest of two short over four long drawers
885	An oak bureau bookcase
886	Two metal filing cabinets
887	Two display cases
888	An oak bureau fitted two drawers
889	A reproduction mahogany display cabinet
890	A white painted four drawer chest
891	A black and white print depicting The Olde Bell & Steelyard, Woodbridge
892	A modern pine kitchen dresser fitted single drawer
893	Anthony Osler, watercolour study depicting a sailing barge; one other watercolour study depicting moored boats; and Jill Loeper, watercolour landscape study
894	A gilt framed wall mirror
895	An Art Deco Melamine sideboard
896	A coloured print depicting Ipswich Town Centre; and oil on board study depicting a moored boat
897	John Western, pencil signed artists proof depicting "Port of Felixstowe"
898	A reproduction mahogany bow front four drawer chest
899	A walnut bedside cupboard fitted single drawer
900	An Eagle plastic nest of drawers
901	A pine chest fitted four drawers
902	A set of six gilt framed coloured prints depicting various towns and landmarks
903	An oak bookcase
904	A set of Beatrix Potter books#
905	A white painted six drawer chest
906	A wooden cantilever sewing box
907	A Victorian mahogany single hole wall clock
908	An angle poise lamp
909	An oak four drawer chest
910	A reproduction mahogany bevel edged wall mirror
911	A box of heater parts
912	A white glazed sideboard fitted two drawers

913	A walnut fire screen
914	A sunburst wall clock
915	A still life watercolour study depicting wild roses
916	A pine barometer in the form of a ships wheel
917	A pair of gilt framed coloured prints
918	An oak linen fold decorated bureau fitted three drawers
919	After Peter Ellenshaw, large coloured print depicting a sunset
920	A circular wicker basket
921	A 19th Century oak drop leaf table
922	A gilt framed wall mirror
923	A Victorian mahogany chiffonier fitted two drawers
924	A box and a tray of cutlery
925	A large white painted wall mirror
926	An oak dresser fitted two drawers
927	A leather bag and contents of bowling woods and shoes
928	An early 20th Century mahogany two door wardrobe
929	An oak and leaded glazed kitchen dresser
930	An oak effect and glazed cabinet
931	A modern pine double bed frame and mattress
932	A loom armchair
933	A shop display counter
934	A pine bunk bed and mattresses
935	An oak two tier tea trolley; a button back elbow chair; and two dressing stools
936	An approx. 3.10 x 3.10 red wool rug
937	An approx. 1.11 x 3.8 Chinese style rug; and an approx 1.11 x 3.11 green patterned rug
938	An approx. 2.3 x 4.5 Braemar Axminster rug
939	An approx. 3.7 x 4.1 Tribal Gazak rug
940	An approx. 3.11 x 5.6 rug
941	An approx. 4.6 x 6.6 Eastern rug
942	An approx. 4.5 x 7.3 Eastern rug
943	A pine chest of two short over three long drawers
944	A brass fire fender
945	A five drawer plans chest
946	A white two door wardrobe fitted two drawers below
947	A black upholstered three seater settee
948	A stags head hunting trophy
949	A large pair of antlers
950	An Art Deco style mirrored panel
951	A pine drop leaf dining table; with three spindle back chairs; and two stools

952	A fishing stool and contents
953	Three boxes of various sundry items
954	A collection of various vases
955	A quantity of metalware to include an Art Deco style three piece teaset, chamber stick, toast rack, hors d'oeuvres dish etc.
956	Two fishing rods in carrying cases
957	A box of sundry items to include dolls, telephone, wire work basket etc.
958	Three suitcases
959	An Abu Garcia 6600 BCX fishing reel
960	Two bags containing necklaces and stick pins
961	A reproduction Lieca camera
962	An old razor contained in Bakelite box; five various wrist watches; and a silver plated fish serving set
963	A BSA Airsporter rifle with carrying case, pellets, and telescopic sight
964	An Original MOD .177 air rifle with scope
965	A BAM .22 under lever air rifle with scope
966	A bag and a container of marbles
967	Three boxes of books #
968	A boxed coffee set; a metal fruit bowl; yellow glazed coffee pot; and various other sundries
969	A bag containing eight bowling woods
970	A gilt framed oil on board, landscape study
971	A gilt framed study depicting three sunflowers framed as one
972	A white painted ottoman; and similar linen basket
973	A painted pine kitchen table
974	A box of various metalware
975	A pine effect two door side cupboard; and matching five drawer chest
976	A large gilt framed tapestry
977	An oak circular topped dining table
978	A Bosch fridge
979	A Bosch dishwasher
980	A Coopers vacuum cleaner
981	An AEG washing machine
982	A Creda dryer
983	A Bosch washing machine
984	A chest freezer
985	A LEC fridge / freezer
986	An electric fire
987	A kitchen trolley
988	A glass topped and metal side table
989	A white painted standard lamp and shade
990	A pair of Stag bedside chests fitted two drawers
991	A teak two tier tea trolley and a camel stool

992	A Corby trouser press
993	An oak stool and an oblong coffee table
994	An oak magazine table fitted single drawer
995	A modern pine corner cupboard
996	A pine CD rack
997	A brass uplighter
998	An Ibex stick back kitchen chair
999	A folding card table
1000	A beech kitchen trolley
1001	An oak drop leaf coffee table
1002	A folding clothes airer; a carpet sweeper; a golf club; a trouser press and a wash dolly
1003	Three beech plant stands
1004	An oak bookcase
1005	A wooden artist's easel
1006	A teak square top table
1007	A Yamaha speaker with USB connection
1008	A box of picture frames
1009	A box of linen and lace
1010	A bag of pictures and watercolours
1011	Two boxes of books and a World Atlas#
1012	A box containing a pair of Wellies; an Aynsley 'Wild Tudor' jardinière; a rolling pin; storage jars etc.
1013	A large coloured print depicting a sailing ship; a watercolour study still life study and a black and white print entitled 'Save'
1014	Two boxes containing tapestries; brass lamp shades; storage jar etc.
1015	A box of various sundry items
1016	A box of games
1017	A Scaletrix set
1018	A box of candles and a graduating set of plastic bowls
1019	An Eastern brass tray and a Dutch style brass embossed plaque
1020	Two floral decorated sauce boats; a silver plated and glass cooking dish; a bird ornament; a vase etc.
1021	A quantity of various glass and china to include jelly moulds; dinner plates; bowls; jugs etc.
1022	A table lamp and shade; a quantity of Doulton dinnerware; a teapot; a framed embroidery etc.
1023	A mannequin
1024	Three boxes of books #
1025	A pair of wrought iron five branch ceiling lights
1026	A box containing tools; a pewter teapot; an advertising jug etc.
1027	A pine corner cabinet
1028	A camera tripod
1029	A glass top coffee table

1030	An Ikea clothes rail
1031	A wicker conservatory chair and a string seated chair
1032	An office swivel chair
1033	A mahogany magazine rack and an elm seated slat back kitchen chair
1034	A swivel office chair
1035	Three 19th Century elm seated Suffolk ball back chairs
1036	A 19th Century mahogany bar back carver chair
1037	A mahogany bedroom chair
1038	Four reproduction mahogany dining chairs; and a string seated bedroom chair
1039	Six boxes of CDs
1040	Two boxes of various sundry china; metalware; kitchenalia etc.
1041	A box of cutlery
1042	A box of sheet music and ephemera
1043	A laser level in carrying case
1044	A quantity of glassware to include vases; amethyst coloured goblet; storage jars etc.
1045	A quantity of Denby pottery dinnerware
1046	A stoneware hot water bottle and a Gritzner hand sewing machine
1047	Seven pottery tankards
1048	A quantity of pottery wall pockets and jardinières
1049	A Singer hand sewing machine with original instruction manual
1050	A silver plated coffee pot; a side pourer; various candlesticks; a copper kettle etc.
1051	A box and a bag of books#
1052	A box of leather bound encyclopaedias and other books#
1053	A quantity of enamel ware to include bowls; jugs and a stainless steel saucepan
1054	A collection of stoneware jars; a hot water bottle etc.
1055	A Frister & Rossmann sewing machine
1056	Five boxes of records
1057	A box of trophies
1058	A brass hot and cold tap
1059	A 12ft beach rod
1060	A quantity of cameras to include Fuji film; Konica etc.
1061	A box of linen
1062	A display case and contents of a glass scent bottle and a mother of pearl dish
1063	A large modern Chinese floral decorated vase
1064	A quantity of various china to include Wedgwood jasperware, large pottery storage jar, gilt decorated dinner plate, preserve jars etc



Lot 896



Lot 721



Lot 948

1065	A camping gas stove; and a stainless steel bread bin
1066	Three boxes of books #
1067	A quantity of Johnson Bros. "Eternal Bow" patterned tea and dinnerware
1068	Four coloured glass goblets
1069	A collection of storage jars; small pottery bowl etc.
1070	A floral upholstered three piece suite, comprising of two, two seater settees and matching armchair
1071	A G-plan button back armchair
1072	A floral upholstered three seater settee
1073	Four Art Deco style mirrored panels
1074	An oak tea trolley
1075	A set of six elm seated stick and wheelback dining chairs
1076	A John Lewis double divan bed and mattress
1077	An Edwardian painted two tier window table
1078	A bundle of fishing rods
1079	A Myers double divan bed and mattress
1080	A French wooden and wicker cot
1081	A Staples single divan bed and mattress
1082	A wooden bound travelling trunk
1083	Four boxes of DVD's and CD's
1084	A box of plate stands
1085	Three boxes of books
1086	A tin hat box
1087	Five hat stretchers
1088	A carpenters tools box and contents
1089	A Howe hand sewing machine and carrying case
1090	Two compasses
1091	A collection of hand tools, router cutters etc.
1092	A Victorian black slate two hole mantel clock AF
1093	A brass pot
1094	A chrome ornament
1095	A Winselmann Titan hand sewing machine
1096	A Universal avometer
1097	A Hardy fishing rod with paperwork from the 'House of Hardy'
1098	A red painted petrol can
1099	A set of kitchen scales and weights
1100	A display case and contents
1101	Four boxes of various sundry china
1102	A box of DVD's
1103	Four packets of plastic pots
1104	Two boxes containing meat plates, china, glassware etc.
1105	A box of linen and fabric

1106	A Bosch blender with accessories and two stainless steel teapots
1107	A BT Vision Box with remote control
1108	A pair of cordless digital phones
1109	A Toshiba flat screen tv
1110	An LG Network 3D Blue Ray disc / DVD player with remote control
1111	A Sony hi-fi with remote control
1112	A hand vacuum cleaner
1113	A five speed drill press
1114	A Bosch electric drill and hand torch
1115	A laser jigsaw
1116	A Silverline electric drill
1117	A battery charger; and a booster cable
1118	A JVC keyboard
1119	An Ikea double bed frame
1120	A large upholstered foot stool
1121	A mahogany bureau; and a footstool
1122	A 1940's crib
1123	A mahogany circular topped table
1124	A quantity of wooden and metal stacking chairs
1125	A G-plan wall unit; and a teak bookcase with sliding glass doors
1126	A pair of Antique French bed ends
1127	A teak bookcase
1128	A reproduction mahogany cabinet
1129	A teak drop leaf table
1130	A wooden tapestry frame
1131	An Ikea bent wood chair
1132	A reproduction mahogany D end extending dining table with one extra leaf
1133	A painted bedroom chair; and a mahogany drop leaf table
1134	A metal three drawer filing chest
1135	A wicker elbow chair
1136	An oak draw leaf table
1137	A linen box; a shopping trolley; and a clothes stand
1138	A pair of white painted three drawer bedside chests
1139	An ornate brass coffee table base
1140	A reproduction mahogany side unit fitted single drawer; and matching tv stand
1141	Two side units; and a white painted linen box
1142	A pair of upholstered dining chairs; a nursing chair; and a footstool
1143	A nest of three occasional tables
1144	An aluminium step ladder
1145	A bundle of canes
1146	An aluminium loft ladder

1147	An oak fire surround
1148	A cast iron fire back
1149	A trailer light board
1150	A wooden step ladder; and an aluminium step ladder
1151	Two spades and a garden edger
1152	Two pasting tables
1153	A golf bag and clubs and a trolley
1154	A set of steps
1155	Two golf bags and clubs and trolley; and a pair of garden edger's
1156	A quantity of garden tools
1157	A wooden and metal ladder
1158	A golf bag and clubs
1159	Two tubs of various hand tools and accessories
1160	A push mower; a lawn scarifier; a long handled tap; two metal pots etc.
1161	A roll of underlay
1162	A golf bag and clubs
1163	A fork; spade; and an axe
1164	A Black Spur workmate
1165	A badminton set; a clothes line; astro pitch etc.
1166	A box of tools
1167	Twelve lengths of 2 x 1.5
1168	Eight lengths of 4 x 4 posts
1169	Twelve lengths of cart rail
1170	Six lengths of 3 x 3 posts
1171	A roll of loft insulation
1172	A caravan Wastemaster; and an aqua roll
1173	Three tin trunks and contents
1174	A wooden garden table with parasol; and a set of six chairs
1175	A conservatory cane two seater settee
1176	A cast iron circular garden table with two chairs
1177	A wrought iron garden table with two chairs
1178	A conservatory suite comprising of a pair of armchairs, footstool, and a breakfast table and chairs
1179	A wooden and cast iron garden bench
1180	A potters wheel and a stool
1181	A wooden and cast iron garden bench
1182	A galvanised water tank
1183	A Hayter petrol lawn mower
1184	A Mountfield petrol lawn mower
1185	A Black & Decker electric strimmer
1186	A Champion petrol lawn mower
1187	A Qualcast petrol lawn mower
1188	A Honda petrol lawn mower
1189	A box of tools

1190	A petrol rotovator
1191	A Qualcast electric lawn mower
1192	Three garden ornaments
1193	A battery charged lawn mower
1194	Three tool boxes and contents
1195	A Qualcast electric lawn mower
1196	A Champion pressure washer
1197	A cast iron feeder
1198	Two boxes containing tools, chain etc.
1199	A petrol chainsaw
1200	Three boxes of tools
1201	Three wooden folding tables
1202	Five garden ornaments in the form of swans
1203	A Partner petrol strimmer
1204	Two boxes of tools
1205	A child's wooden and cast iron garden bench
1206	A cast iron water pump
1207	A Kettler car
1208	A petrol can
1209	A metal tool box and contents
1210	A Magna mountain bike
1211	A gent's Raleigh bicycle
1212	A ladies Raleigh bicycle
1213	A gent's red mountain bike
1214	A ladies Ranger bicycle
1215	A boys Peugeot mountain bike
1216	A boys green BMX
1217	Nine wooden ammo boxes
1218	A metal trolley and a wooden trolley
1219	Two boxes of tools
1220	An anvil on wooden base
1221	Two boxes of tools
1222	A wood burner
1223	Two boxes of tools
1224	Two trays containing door knobs, tools, wire etc.
1225	A cast iron fire basket and a pair of dogs
1226	A wooden tool box and contents
1227	A cast iron fire surround
1228	A wooden and cast iron garden bench
1229	A hexagonal cast iron garden table
1230	A hexagonal cast iron garden table
1231	A dustbin and a kitchen bin
1232	Ten galvanised tunnel hoops
1233	Three folding garden chairs
1234	A painted chicken coop
1235	An approx. 7' x 4' twin axle trailer
1236	A bundle of metal hinges; cast iron fittings etc.

1237	A metal harrow
1238	A cast iron feeder
1239	A galvanised bath and contents
1240	A glass topped garden table
1241	17 metal post holders
1242	A metal workbench
1243	Ten galvanised climber hoops
1244	A pair of galvanised entrance gates
1245	A crate of plastic garden pots
1246	20 concrete slabs
1247	Four red glazed planters
1248	A chicken coop and run
1249	A garden sprayer
1250	A quantity of plastic crates
1251	Six hanging baskets
1252	Two green painted sign stands
1253	Seven black metal stands
1254	A galvanised sheep pen
1255	A galvanised sheep pen
1256	A galvanised sheep pen
1257	Four red glazed planters
1258	A roll of chicken wire
1259	An approx. 5' x 3' single axle car trailer

Denotes zero rated for VAT

Art Deco, 20th Century Design & Retro

Monday 13th April at 10am

Viewing: Friday 10th April from 2pm - 7pm

Saturday 11th April 9am - 12noon

morning of the sale from 8.30am

Catalogue Available

