



Clarke &  
Simpson

**Fine Art & Interiors**

Wednesday 19th March 2025 at 10 am

**Clarke &  
Simpson**

Auctions

*Always open..*



**Valuation**

Probate & other valuation  
Call-in service 6 days a week

**Special Sales**

Bespoke Auctions  
Fine Art & Interiors  
Domestic & Rural Bygones  
Agricultural Collective

**General Monday sale**

In 2024 we sold lots to, and registered buyers  
from over 70 countries world wide  
Acting as agents for household clearances

**Can't make it?**  
All auctions are available  
for online bidding via  
**the-saleroom.com**  
or **i-bidder.com**



Clarke & Simpson Auction Centre,  
Campsea Ashe, Nr Wickham Market,  
Suffolk IP13 0PS T: 01728 746323

[www.clarkeandsimpson.co.uk](http://www.clarkeandsimpson.co.uk)

CandSAuctions

CandSAuctions

# Clarke & Simpson

Auctions

## Fine Art & Interiors

Wednesday 19th March 2025  
at 10 am

### Order of Sale:

Silver & Plate	1 – 205
Jewellery	215 – 269
Ceramics & Glass	270 – 376
Objects & Collectables	377 – 474B
Pictures & Prints	475 – 613
Furniture	615 – 730

### Viewing:

Saturday 15th March, 9am – 12noon  
Monday 17th March, 2pm – 7pm  
Tuesday 18th March, 10am – 4pm  
Morning of Sale from 8.30am

 CandSAuctions

 CandSAuctions



Campsea Ashe  
Nr. Wickham Market  
Suffolk IP13 0PS  
Tel: (01728) 746323  
Email: [auctions@clarkeandsimpson.co.uk](mailto:auctions@clarkeandsimpson.co.uk)  
[www.clarkeandsimpson.co.uk](http://www.clarkeandsimpson.co.uk)

BID ONLINE

**thesaleroom.com**

The home of art & antiques auctions

# Special Sales Calendar 2025



FARM MACHINERY  
26th March - 2nd April

MILITARIA, AIRGUNS  
& FIREARMS  
12th April

FARM MACHINERY  
4th - 11th June

FINE ART & INTERIORS  
25th June

VINTAGE MACHINERY  
26th July

MILITARIA, AIRGUNS  
& FIREARMS  
16th August

RURAL BYGONES  
27th September

FINE ART & INTERIORS  
17th October

FARM MACHINERY  
5th - 12th November

FINE ART & INTERIORS  
26th November

MILITARIA, AIRGUNS  
& FIREARMS  
13th December



Lot 4

**1**  
An Italian white metal circular tray, having gadrooned border, stamped 800, R. Miratoli Milano, 29cm dia. 15oz      £150 - 200 †

**2**  
A set of four William IV silver dessert spoons, Old English pattern monogrammed, London 1836; a pair of Exeter silver Fiddle pattern dessert forks, 1841; and four George III Fiddle pattern teaspoons, London 1821 11.5oz      £150 - 200 †

**3**  
A small Edwardian oval silver basket, having pierced border, London 1908, 5oz      £80 - 120 †

**4**  
An Edwardian silver salver, having pie crust and shell decorated border, foliate scroll field and central entwined monogram, raised on four hoof feet, London 1901, 37cm dia. 47oz      £600 - 800 †

**5**  
A late Victorian silver bachelors tea pot, having serrated border and black wood handle and lift, raised on three pad feet, Birmingham 1897, 7.5oz      £100 - 150 †

**6**  
A Victorian silver baluster chocolate pot, with embossed foliate decoration, the domed hinged lid with flambé finial, black wood handle, 23cm high, London 1885, 12.5oz      £150 - 200 †

**7**  
An Edwardian cased silver Christening fork and spoon, with Trefid ends, Sheffield 1904; and a silver child's Christening spoon in Harrods case      £40 - 60 †

**8**  
A pair of George V octagonal silver baluster pepperettes, London 1924; a silver octagonal mustard pot, Birmingham 1911; a silver mustard pot with foliate embossed decoration, Birmingham 1903; and an oval silver mustard pot, Birmingham date letter indistinct      £60 - 100 †

**9**  
A pair of numbered silver napkin rings, with beaded decoration, London 1889; a square silver engine turned decorated napkin ring and two others, 5oz      £60 - 100 †

**10**  
A silver tea strainer and bowl, London 1928/29; and a small silver four division toast rack, Sheffield 1905 AF      £30 - 50 †

**11**  
A small silver Edwardian Christening mug, having half fluted body decoration, Sheffield 1906; and a large William IV baluster Christening mug, marks indistinct, 7.5oz      £80 - 120 †

**12**  
A small silver Christening mug, Birmingham 1930; another similar, Birmingham 1951; and a small silver cream jug with foliate and fluted body decoration, London 1899, 5.5oz      £60 - 100 †



Lot 6



Lot 19

**13**  
A set of six silver Art Nouveau design buttons, Birmingham 1903; stamped L.C. & Co. Ltd £40 - 60 †

**14**  
A Victorian silver Fiddle pattern dessert spoon, London 1856; and a collection of various Victorian and later silver teaspoons, 7oz  
£80 - 120 †

**15**  
Three Victorian silver dinner forks, crested, London 1856; a matching dessert fork; and another, 10oz  
£150 - 200 †

**16**  
A collection of various silver fancy spoons, condiment spoons, tea spoons, butter knife etc. total weight 6oz  
£80 - 120 †

**17**  
Four various silver sugar tongs, 3oz  
£40 - 60 †

**18**  
A pair of George III Old English pattern tablespoons, London 1791, monogrammed  
£40 - 60 †

**19**  
A late Victorian silver oval salt, having and pierced and garland decorated border raised on circular spread foot, complete with blue glass liner, Birmingham 1892, 13cm  
£40 - 60 †

**20**  
An Edwardian silver baluster sug shaker, London 1904, 16cm high, 4oz  
£60 - 80

**21**  
A silver miniature lidded tankard produced for the Merchant Tailor Company in Commemoration of the 600th Anniversary of the Granting of the Company's First Charter, with presentation inscription and leaf decoration, London 1927, 8cm high, 6oz  
£80 - 120

**22**  
A Continental white metal shall oval pin dish, decorated with dancing figures around a serpent and tree, 14cm; and a Continental white metal bowl with raised folia decoration and shaped border, 13cm dia.  
£40 - 60 †

**23**  
A pair of silver dwarf candlesticks, Birmingham 1905, with loaded bases AF, 9cm high; a silver pie crust bordered coaster by Adie Bros. Birmingham 1945, retailed by Bravingtons Ltd. London; and a modern silver and turned wooden coaster  
£40 - 60 †



Lot 21

**24**  
A cased set of silver seal end coffee spoons, Birmingham 1924; and a cased set of six bean end coffee spoons  
£40 - 60 †

**25**  
A large quantity of various plated cutlery; a plated hot milk jug; a plated sugar sifter etc.  
£30 - 50 †

**26**  
Two pairs of graduated plated entrée dishes, with shell and gadroon decorated borders and two other plated entrée dishes  
£40 - 60 †

**27**  
Two Continental white metal studies of fighting cocks, stamped Esterlina 925 Camusso, the largest 30cm long x 15.5cm high overall, 31oz; the smaller example 24cm long x 16.5cm overall 29oz AF  
£700 - 800 †



Lot 28

**28**

**A heavy silver ships bell**, with presentation inscription to 'Sir W. Bentley Purchase CBE, MC, with thanks from the Supply Officers of the Royal Navy 1920-1958' by the Goldsmiths and Silversmiths Company, *London 1944*, 64oz, 19cm high x 18cm dia. in extremes NB. Sir William Bentley Purchase CBE, MC was a British physician and barrister. From 1930-1958 he served as the coroner over much of London. He played a key role in the development of Operation Mincemeat, a successful World War II deception operation to disguise the 1943 Allied Invasion of Sicily. The operation was the basis of the 1956 film 'The Man Who Never Was'. As coroner he held approx. 20,000 inquests. £1,500 - 2,000 †



Lot 29

**29**  
A pair of cast silver candelabra, having detachable three light tops on baluster columns and octagonal bases, *London 1957*, 28cm high, 70oz £800 - 1,200 †

**30**  
A plated Corinthian column lamp base, with candlestick style top, 66cm high overall £30 - 50 †

**31**  
A pair of plated Corinthian column table lamps, complete with pleated silk shades 74cm high including shades £100 - 200 †

**32**  
A pair of silver candlesticks, with reeded decoration, loaded bases, *Sheffield 1908*, 22cm high AF £40 - 60 †

**33**  
A silver tea pot, of octagonal form, having stylised border decoration, wooden handle and lift, monogrammed to the side, *Sheffield 1929*; and a similar hot water jug *Sheffield 1924*, total weight 40oz £400 - 600 †

**34**  
A collection of eleven various silver napkin rings £100 - 150 †

**35**  
A collection of twelve various silver napkin rings £100 - 150 †

**36**  
An Eastern white metal tray, the border with animal decoration; a pair of mother of pearl and ebonised servers; eight J. Tostrup, Norway fruit knives etc. £40 - 60 †

**37**  
A silver backed hand mirror, a pair of silver backed brushes and a white metal foliate embossed crumb brush £20 - 40 †

**38**  
A white metal thimble shaped measure, stamped to base W.B.800; a pair of Continental white metal salts in the form of llamas carrying baskets, stamped 925 to base; a set of six South American white metal teaspoons with llama decoration, stamped 925; a white metal figure group depicting a farmer herding llamas; various other items of Continental white metal ware etc. £40 - 60 †

**39**  
A silver card tray, having shaped border raised on three hoof feet, *Sheffield 1936*, 21cm dia. 11oz £150 - 250 †

**40**  
A silver salver, with gadrooned pie crust border raised on four stylised feet, *Sheffield 1929*, 30cm dia., 29.5oz £400 - 600 †

**41**  
A mid-20th Century silver pedestal dish, by Adie Bros., having foliate shaped border and central scroll, *Birmingham 1954*, 22cm dia. 7.4oz £100 - 200 †



Lot 44



Lot 40





Lot 42

**42**  
An Edwardian circular silver foliate embossed stand, *London 1905*; 24cm dia. 11oz £150 - 250 †

**43**  
An Edwardian silver tea caddy, of elliptical shape, the hinged lid surmounted by a flambé finial, gadroon border decoration, *London 1902*; 12.5cm high, 9oz £100 - 150 †

**44**  
A late Victorian silver cylindrical dressing table box and cover, by The Goldsmiths and Silversmiths Company, profusely decorated foliate scrolls and cherubs, *London 1898*, 8.5cm high x 8cm dia. £60 - 80 †

**45**  
An antique wooden and white metal mounted bowl, of baluster form, the circular foot having raised stylised decoration, 12.5cm dia. x 6cm high £40 - 60 †

**46**  
A cased set of six silver classical teaspoons, including Acanthus knob, Wrythen knob, and Seal top £40 - 60 †

**47**  
A silver cased Strut clock, with engine turned decoration, *Birmingham 1924*, enclosing an eight day movement, 8cm high and a circular silver engine turned decorated ladies compact £40 - 60 †

**48**  
A George V cased silver cruet, *London 1932*, having odd spoons £40 - 60 †

**49**  
A small collection of various silver teaspoons, condiment spoons, sugar nips and a butter knife £40 - 60 †

**50**  
A pair of good quality silver engine turned decorated serviette rings, three others 4.5oz and a small silver mounted circular photograph frame £60 - 80 †

**51**  
A cased silver three piece cruet, by Adie Bros., *Birmingham 1958*, having odd silver and plated condiment spoons £40 - 60 †

**52**  
A cased set of six each silver butter knives and cake forks, by Walker & Hall, *Sheffield 1908* £60 - 100 †

**53**  
A silver shell shaped dish, having foliate engraved decoration, raised on three scrolled feet, *Birmingham 1924*, 4oz; and a small white metal bowl with shaped border stamped to the underside 'Hardy Bros. Sydney and Brisbane' £40 - 60 †



Lot 43



Lot 54

**54**  
A G. Hellstrom & Co. circular silver and enamel box, 5cm dia.  
£40 - 60 †

**55**  
A miniature silver tea pot and tea kettle on stand, Birmingham 1908; a matching silver and oak two handled tray and a plated sucrier  
£60 - 80 †

**56**  
Five Victorian silver Fiddle pattern teaspoons, monogrammed, London 1839 and five George III Old English pattern teaspoons, 5oz  
£60 - 80 †

**57**  
A late Victorian silver card tray, by The Goldsmiths and Silversmiths Company, having pie crust and shell decorated border, central monogram, raised on three claw and ball feet, 22cm dia., 12oz  
£150 - 250 †

**58**  
A silver wine funnel, with beaded border and shell decoration, Birmingham 1940  
£40 - 60 †

**59**  
A small late Victorian silver shell shaped dish, decorated with a figure of a young girl, Birmingham 1894, 11cm and a silver salt, Sheffield 1898  
£40 - 60 †

**60**  
A George V silver octagonal shaped cream jug and matching sucrier, having gilded interior, monogrammed to the exterior, London 1925, 15.5oz  
£200 - 400 †

**61**  
A late Victorian silver four piece tea and coffee set, having half fluted body decoration, the tea pot and coffee pot with black wood handle and lift, London 1898, 46oz  
£800 - 1,200 †

**62**  
A George III silver plate on copper baluster lidded jug, with fruitwood handle, 29cm high and a Victorian Elkington & Co. segmented plated tureen cover, 35.5cm wide  
£60 - 80 †

**63**  
A heavy George III silver bottle coaster, by Rebecca Emes and Edward Barnard, having turned wooden base, 16.5cm wide, London 1818  
£120 - 180 †

**64**  
A Chinese silver tumbler, with raised dragon design, seal mark to base; and a Chinese silver dish with coin to centre, stamped 'Sterling'  
£80 - 120 †

**65**  
An Edwardian large silver novelty pin cushion, in the form of a shoe, having wooden sole, 12.5cm long, Chester 1909  
£120 - 150 †

**66**  
A Berthold Muller silver model of a sofa, Chester 1901, import mark, 11cm wide, 3.4oz  
£80 - 120 †

**67**  
A novelty shoe horn and button hook, with Hallmarked silver handles, dog head terminals, Birmingham 1908, the hook 23cm long  
£40 - 60 †

**68**  
A plated cocktail shaker, with presentation inscription; a plated wine bottle coaster with vine decoration; a plated ice bucket and a syphon stand  
£30 - 50 †

**69**  
A large plated two handled tray; two pairs of plated spill vases; a plated a glass sardine dish; tankards; chocolate pot etc.  
£40 - 60 †

**70**  
Two plated 5 o'clock tea kettles, one on sprit heater stand the other with spirit burner missing, having fluted body decoration  
£40 - 60 †

**71**  
A Continental white metal spoon, having twist handle stamped 830, possibly Swedish; a plated salt with blue glass liner; a plated four division toast rack and a cut glass and plate mounted pedestal salt, possibly W.M.F.  
£60 - 80 †

**72**  
A cut glass triple ring neck decanter, having silver collar and mushroom stopper, 29cm high and another cut glass decanter of baluster shape with silver collar 29cm high  
£40 - 60 †

**73**  
A pair of Victorian Edinburgh silver sugar tongs, with shell shaped terminals; another pair Edinburgh 1840; a pair of silver scissor action sugar nips; a pair of silver wishbone sugar nips; and two other pairs  
£60 - 80 †

**74**  
A Continental silver serving slice, with pierced and foliate engraved decoration; and a pair of Continental silver forks with embossed decoration  
£40 - 60 †



Lot 66



Lot 82

**75**  
A silver tea strainer, *Sheffield 1946*; a smaller example; a Continental white metal strainer with spot hammered decoration and ebonised handle; a Victorian silver sifter spoon with mother of pearl handle, *Birmingham 1847* probably by George Unite; a Victorian silver sifter spoon with bead edge decoration *London 1875*; a continental white metal sifter spoon with foliate embossed decoration and a small circular silver pin dish  
£80 - 120 †

**76**  
Twelve various silver decanter labels  
£100 - 150 †

**77**  
A Dutch silver coffee pot and matching hot water jug, of baluster form stamped 925 bearing import marks to the base, fitted wooden handles and lift, 45oz gross  
£500 - 600 †

**78**  
A late Victorian silver caddy spoon, in the form of a coal scoop with foliate decoration and mother of pearl handle; a silver caddy spoon, *Birmingham 1976* with London crest of arms; and a silver caddy spoon, *Birmingham 1964*  
£40 - 60 †

**79**  
A small silver and enamel patch box, the lid decorated with a horse and jockey AF; three silver matchbox holders and a white metal plaque decorated with a 1920's lady and initialled M.M. on oak plinth with reverse plaque, inscribed '1a Piccadilly Arcade, 67 St. James Street, 25 Bruton Street'  
£40 - 60 †

**80**  
A Victorian silver baluster Christening mug, with foliate engraved decoration and fluted body, *Birmingham 1895*; a plain baluster example with *Chester Hallmarks* and a silver spirit tot *London 1891*  
£60 - 80 †

**81**  
A Gorham Sterling stand dish, of fluted lobed shape; and a silver sugar bowl having shaped border, *Sheffield 1928*, 9oz  
£100 - 150 †

**82**  
A silver baluster sugar shaker, Hallmarked for *Birmingham*, marks indistinct, 14cm high; and a small silver baluster Guernsey jug  
£40 - 60 †

**83**  
A collection of various silver trumpet shaped spill vases; a silver twin handled trophy cup etc. (bases mostly loaded)  
£60 - 100 †

**84**  
A 19th Century cut glass and silver mounted cruet bottle; various silver mounted sugar shakers; a mustard jar; a silver mounted pepper grinder etc.  
£40 - 60 †

**85**  
A silver sweetmeat stand, with lobed border and pierced circular foot, *Sheffield 1976*; a silver pedestal sweetmeat stand with loaded base; and a white metal basket of lobed form  
£80 - 100 †

**86**  
A George V silver sweetmeat stand, by Mappin & Webb, *Sheffield 1931*; another of octagonal form with pierced border, *Birmingham 1934*; a smaller modern silver example 6oz, and a white metal dish with embossed foliate decoration  
£60 - 100 †

**87**  
A silver mounted cut glass bitters bottle; five various silver mounted glass preserve jars; a cut glass similar and various silver spoons  
£50 - 60 †

**88**  
A late Victorian silver mustard pot, with blue glass liner with monogrammed cartouche and pierced decoration, *Birmingham 1898*; a George III silver condiment spoon; pair of silver mustard pots; a pair of matching silver salts; a pair of peppers etc.  
£80 - 120 †

**89**  
Various glass and silver mounted dressing table jars and perfume bottles  
£40 - 60 †

**90**  
An Edwardian silver porringer, flanked by ring handles *London 1908*; and an Edwardian silver porringer with presentation inscription, *Sheffield 1904*, 9oz  
£120 - 160 †

**91**  
A silver coaster with turned wooden base, *London 1996*  
£40 - 60 †

**92**  
A Norwegian silver and enamel banded baluster shaped pot, 11cm overall  
£40 - 60 †

**93**  
A pair of silver dwarf candlesticks with loaded bases; and a single similar; a cut glass powder bowl with silver lid; a circular ebony bowl with silver mounts and wishbone decoration; a glass and silver mounted similar and two pin cushions  
£60 - 80 †

**94**  
Three various silver napkin rings; three silver page markers; a heavy silver buckle; and three miniature silver and white metal miniature items  
£60 - 80 †

**95**  
A cut glass and silver mounted finger bowl; a glass butter dish with silver mounts; various silver and white metal cruet items; silver mounted glasses etc. some AF  
£40 - 60 †

**96**  
A cased silver cake fork set, *Birmingham 1931*  
£40 - 60 †

**97**  
A cased set of six silver teaspoons, with pierced terminal decoration *Sheffield 1951*; and a cased set of six silver cocktail sticks with enamel cockerel terminals AF  
£40 - 60 †

**98**  
A cased set of six silver teaspoons with golf club terminals; and a cased Continental white metal butter knife and preserve spade  
£30 - 50 †



Lot 91



Lot 108

**99**  
A cased set of Victorian silver Fiddle pattern teaspoons

£40 - 60 †

**100**  
A cased set of silver coffee spoons, Sheffield 1938

£30 - 40 †

**101**  
A cased set of six silver seal end teaspoons, by Mappin & Webb, Birmingham 1920

£30 - 40 †

**102**  
A cased set of six silver teaspoons, Birmingham 1956

£30 - 50 †

**103**  
A Carrs contemporary silver double spirit measure; a Carrs glass ice bucket with silver swing handle and silver tongs; and two cased Carrs silver preserve pots and spoons

£60 - 80 †

**104**  
A cased set of six silver handled fruit knives, retailed by Croydon & Sons, Ipswich; and a cased set of six silver handled fruit knives with shell and thread handles and foliate decorated blades

£40 - 60 †

**105**  
Four Continental 800 mark table spoons, with floral and line decoration, monogrammed to the reverse; a pair of silver ice cream spoons with Arts & Crafts style terminals, Sheffield 1935 and an America Sterling cocktail stirring spoon

£40 - 60 †

**106**  
A pair of George III silver Fiddle pattern table spoons, monogrammed, London 1810; a pair of Victorian similar London 1852; a pair of early George II silver Old English pattern spoons, marks indistinct; a silver Old English pattern spoon, Sheffield 1896; and a Continental white metal; spoon, 15oz

£180 - 220 †

**107**  
A modern silver mounted folding six section photograph frame; a silver mounted double photograph frame and two others

£60 - 80 †

**108**  
A set of six George III silver Fiddle and Thread pattern dessert spoons, terminals with family crest, Sheffield 1815, 8.5oz

£100 - 150 †

**112**  
A glass butter dish, on silver stand; a silver desk tidy with weighted base; a silver mounted bottle pourer and an ebonised plinth

£30 - 40 †

**113**  
A cased set of six silver handled tea knives; a silver handled cheese knife; a butter knife; four dessert forks; four silver handled Shell and Thread pattern bladed knives and a quantity of pistol grip knives

£30 - 60 †

**114**  
A Fiddle pattern plated soup ladle, bearing crest; a matching basting spoon; a pair of sauce ladles; a plated ham bone holder; and a plated and mother of pearl ham fork

£20 - 40 †



Lot 109

**109**  
Four Victorian silver Kings pattern table spoons, London 1854; a pair of matching forks, London 1841, and another 1852, 23oz

£250 - 300 †

**110**  
A collection of various silver and white metal fancy spoons; Fiddle pattern teaspoons; condiment spoons; butter knife; pickle forks with mother of pearl handles etc. 17oz total weight

£150 - 200 †

**111**  
A Victorian silver Old English pattern basting spoon, London 1889; another 1840; a Victorian silver presentation spoon From The Rector of Grouville inscribed 1917; and a Continental serving spoon with pear shaped bowl

£80 - 120 †

**115**  
A modern Sheffield silver Fiddle, Shell and Thread pattern part canteen, of silver flatware comprising table forks, table spoons, dessert spoons, teaspoons, silver handled table knives and fish knives (incomplete) contained in a mahogany Osborne case, weighable silver 129oz

£2,000 - 3,000 †

**116**  
Four various silver mounted photograph frames

£40 - 60 †

**117**  
Three various silver mounted photograph frames

£30 - 60 †

**118**  
A silver mounted folding double photograph frame; a large silver mounted photograph frame with scroll decoration and two others

£60 - 80 †



Lot 114



Lot 133

**119**  
A silver mounted easel photograph frame, of cartouche shape; and another with raised foliate decoration £40 - 60 †

**120**  
A silver mounted easel photograph frame, of cartouche shape; and an oblong similar with foliate embossed decoration £20 - 40 †

**121**  
An oval silver mounted easel photograph frame; and a silver and oak folding double photograph frame £40 - 60 †

**122**  
Two silver mounted rectangular easel photograph frames £20 - 40 †

**123**  
Three various silver mounted easel photograph frames £30 - 50 †

**124**  
Two silver mounted rectangular easel photograph frames, 12cm x 16cm £20 - 40 †

**125**  
A modern silver easel mirror, with bevelled plate, 25cm x 20cm £30 - 50 †

**126**  
A cased silver ash tray, with engine turned decoration, Birmingham 1983; a small circular similar, Birmingham 1935; and another with presentation inscription, Birmingham 1944, total weight 7oz £80 - 120 †

**127**  
A pair of circular silver twin handled dishes, London 1923 and 1929; a smaller similar and a small pie crust bordered pin dish, total weight 11oz £150 - 200 †

**128**  
Two miniature silver Armada type dishes, one with inscription and six small continental circular silver dishes, total weight 11oz £150 - 200 †

**129**  
A pair of silver scallop shaped dishes, with embossed decoration Birmingham 1893; another London 1905 and another Sheffield 1905, total weight 6oz £80 - 120

**130**  
A silver cream jug, Birmingham 1927; and a larger similar of panelled form, Birmingham 1964, 6oz £80 - 120 †

**131**  
A George VI silver cream jug, having flying C scroll handle raised on three pad feet, Birmingham 1930; and a smaller example, Sheffield 1925, 5oz £60 - 80 †

**132**  
A Boardman Sterling baluster bowl, by Paul Revere 15.5cm dia., 7oz £60 - 80 †

**133**  
A pair of 925 marked miniature shell shaped salts and spoons, with cherub decoration £40 - 60 †

**134**  
A small late Victorian silver toast rack of arched form, London 1896; and two later examples, 5oz £60 - 80 †

**135**  
A small George IV silver four bottle cruet, marks indistinct £60 - 80 †

**136**  
A late Victorian silver ink stand of boat shape, with glass bottle having hinged silver mount, 15cm long £40 - 60 †

**137**  
A Carrs silver candle snuffer, having turned wooden handle; a cased bottle opener with Sterling silver handle and a cased boot hook and shoe horn set with embossed silver handles £60 - 80 †

**138**  
An Edwardian silver trinket box, the hinged lid embossed with a scene of figures and horse and carriage, blue velvet lined interior, maker William Comyns, London 1904, 12cm long £40 - 60 †

**139**  
A George IV silver four division toast rack, raised on shell decorated scroll feet, London 1825, 14.5cm long; and a 20th Century silver toast rack, Sheffield 1932, total weight 9oz £120 - 160 †

**140**  
A pair of Edwardian pierced silver bon bon dishes, Birmingham 1906; a pair of Victorian larger similar, Birmingham 1897; and four various others, 9oz £120 - 160 †

**141**  
An unusual Victorian silver six division toast rack of fan shape, raised on Rococo type scrolled feet surmounted by a loop handle, London 1848, 16cm long x 18cm high, 9oz (some damage) £150 - 200 †



Lot 139



Lot 141



Lot 146

**142**  
A late Victorian cut glass and plate mounted claret jug, 26cm high  
£40 - 60 †

**143**  
An Edwardian silver mounted hourglass shaped decanter, Birmingham 1903, 27.5cm high  
£80 - 120 †

**144**  
An Edwardian silver mounted Art Nouveau style baluster claret jug, London 1902, 28.5cm high  
£100 - 150 †

**145**  
A white metal coffee pot of baluster form, having fluted panels and floral scroll decoration, stamped 900 to the base, 24oz total weight, 26cm high  
£150 - 200 †

**146**  
A George III silver tankard, of cylindrical tapering form with ring banded decoration and angular handle, London 1797, 11oz, 12cm high  
£150 - 200 †

**147**  
A late 20th Century silver wine funnel, having beaded and shell decoration, Birmingham 1997, 14cm high  
£60 - 80 †

**148**  
A hobnail cut glass claret jug of baluster form, the plated mounts stamped 'Potter, Sheffield' with hinged lid and ornate scrolled handle, 28cm high  
£60 - 100 †

**149**  
A cut glass claret jug of baluster form, with hobnail and thumb press decoration with plated foliate scroll mounts, C scroll handle and hinged lid, 26cm high  
£80 - 120 †

**150**  
A continental white metal mounted punch set, comprising of a cut glass punch bowl with rams head mask mounts and loop handles, the lid surmounted by a Bacchanalian cherub, 35cm high, and ten matching tumblers (with some damage)  
£100 - 150 †

**151**  
An early George V silver compot, retailed by Waring & Gillow Ltd. having pierced foliate border decoration flanked by loop handles, raised on a baluster column and pierced spread foot, London 1913, 21cm high, 24oz  
£300 - 400 †

**152**  
A late Victorian silver and hobnail cut glass inkwell, raised on a square gadrooned and foliate embossed base, terminating in scrolled feet, London 1899, 9.5cm wide  
£40 - 60 †

**153**  
A small silver gilt baluster cream jug, 10cm high, Sheffield 1959, 4.5oz  
£60 - 80 †

**154**  
A cased pair of silver fruit servers, having foliate and ribbon tied terminals, London 1929  
£50 - 80 †

**155**  
A late Victorian cased fork and spoon set, Old English pattern, London 1899  
£60 - 80 †

**156**  
A cased set of twelve silver teaspoons, retailed by William H. May, Clumber Street Nottingham, terminals with foliate decoration, Sheffield 1943  
£60 - 100 †

**157**  
A Queen Elizabeth II Royal Lineage limited edition Armada dish, 13cm dia. London 1972I, 4.5oz  
£60 - 80 †

**158**  
A cased silver three piece cruet, Birmingham 1928 and associated condiment spoons  
£60 - 80 †

**159**  
A cased three piece silver cruet and associated condiment spoons, Birmingham 1925  
£40 - 60 †

**160**  
A cased set of six silver medallions depicting The Royal Family, London 1972, 9oz each medallion, 5cm x 4cm  
£150 - 200 †

**161**  
A cased The Churchill Years commemorative medallion set; and a silver Queen Elizabeth II 1977 Royal Jubilee replica, The Stamp of Royalty  
£100 - 150 †

**162**  
A George V oval silver bread basket, having gadrooned rim and pierced border decoration, Chester 1916, 29cm long, 13oz  
£150 - 250 †



Lot 150



Lot 151

**163**  
A late Victorian silver sugar bowl on stand, having raised foliate decoration and gadrooned borders, *Sheffield 1900*, the bowl 11.5cm dia. x 7.5cm high, the stand 15cm dia. 10oz £150 - 200 †

**164**  
An Edwardian spot hammered silver side pouring chocolate pot, with black wood handle and lift, raised on scrolled feet, *London 1908*, 18cm high, 13oz £150 - 250 †

**165**  
A late Victorian silver chocolate pot, of panelled tapering form, the domed lid surmounted by an acorn finial with wooden scroll handle, *London 1900*, 17cm high, 14oz £150 - 250 †

**166**  
A Victorian silver baluster goblet, having raised foliate decoration and cartouche on out swept stem and circular spread foot, *London 1863*, 15.5cm high, 6oz £100 - 150 †

**167**  
An Edwardian silver sugar shaker of baluster urn form, having raised mask and garland decoration and square base, *Birmingham 1904*, 19cm high, 7oz £80 - 120 †

**168**  
A Victorian cut glass baluster claret jug, silver mounted with domed hinged lid and scroll handle, *Birmingham 1898*, 25cm high £100 - 150 †

**169**  
A Queen Elizabeth II Silver Jubilee Year circular silver tazza, with stylised decoration, makers mark K.B., raised on baluster stem and circular spread foot, 15.5cm dia. x 9cm high, 10oz £150 - 200 †

**170**  
A George III silver chamber stick, having gadrooned and shell decorated border, *Birmingham 1814*, 9.5oz. the associated snuffer unmarked £100 - 150 †

**171**  
A Victorian silver pedestal sugar basin, with reeded scroll handles, embossed floral and garland decoration on an out swept column and oval spread foot, *Birmingham 1874*, 22.5cm wide overall x 13cm high, 12oz £150 - 200 †

**172**  
A late Victorian silver bachelors tea set of panelled form, having black wood handle raised on pad feet; a matching scruicer with acanthus sea scroll handles *Chester 1895*; and a similar silver helmet shaped cream jug, *Birmingham 1895*, total gross weight 18oz £200 - 300 †



Lot 167



Lot 166



Lot 171

**173**  
An Edwardian silver bachelors tea set, having gadrooned border decoration raised on pad feet, the tea pot with black wood handle and lift, *Sheffield 1908/09*, gross total weight 25oz £300 - 400 †

**174**  
A 20th Century silver platter, decorated with a Dickensian scene, *Birmingham 1972*, 29cm dia. 25oz, limited edition 38/750 £300 - 400 †

**175**  
A silver swing handled fruit basket, by Walker & Hall, *Sheffield 1936*, 25cm dia. x 11cm high, 190z £250 - 300 †



Lot 175



Lot 176

**176**  
A George V silver trophy, flanked by foliate scroll handles, raised on a circular spread foot by Gladwin Ltd. Sheffield 1925, 35.5cm dia. in extremes, 44oz. £600 - 800 †

**177**  
A Victorian silver pedestal goblet by George Unite, having foliate engraved decoration around a central crest on cylindrical tapering stem and stepped foot, Birmingham 1871, 15cm high, 4.5oz £60 - 80 †



Lot 182

**178**  
A pair of 20th Century silver coasters, having turned wooden bases, Birmingham 1968, 14.5cm dia. £60 - 80 †

**179**  
A pair of George V silver twin handled bowls, of Monteith shape by Aidie Bros. Birmingham 1935, 23cm wide overall, 11cm high, 21oz £250 - 350 †

**180**  
A 20th Century silver tankard by Edwin Viner, having 'Kingfisher' decoration and circular spread foot, Sheffield 1935, 6oz; and a smaller baluster tankard 3.5oz £120 - 160 †

**181**  
A George V four piece silver tea set, of octagonal panel form with stylised foliate band decoration the tea pot and hot water jug with black wood handle and lift, Sheffield 1924/25, 51oz gross £700 - 800 †

**182**  
An early George V silver pedestal bowl, of octagonal panelled form, Birmingham 1910, 17cm dia. overall x 13.5cm high, 14oz £150 - 250 †

**183**  
An Edwardian oval silver bon bon dish, with gadrooned border and pierced panels, Chester 1906, 18.5cm long, 2.5oz £40 - 60 †

**184**  
A 20th Century silver pedestal bon bon dish, having stylised embossed baluster stem and spread foot, 13.5cm, 5oz £80 - 120 †

**185**  
A George V silver goblet, having waisted stem and circular spread foot, 19cm high, 6oz £80 - 120 †



Lot 177

**186**  
A three branch silver epergne, Birmingham 1910, loaded base, 18cm high £30 - 60 †

**187**  
A pair of silver candlesticks, having filled bases, London 1984, 19cm high £40 - 60 †

**188**  
A cased silver tankard of baluster form, having presentation inscription 'Bass Gold Cup', Sheffield 1970, 14cm high, 11oz £150 - 200 †

**189**  
A pair of silver cream jugs having serrated borders, scroll handles and pad feet, Birmingham 1915, 7oz £80 - 120 †

**190**  
A small circular silver bowl, Birmingham 1930, 10.5cm dia. x 5cm high, 3.5oz £40 - 60 †

**191**  
A small circular silver gilt bon bon dish, having pierced border, Birmingham 1962, 13cm dia. 3oz £60 - 60 †

**192**  
A Sterling shallow bowl, with beaded and pierced border, 18cm dia. £20 - 40 †



Lot 184



Lot 188





Lot 193

**193**  
A Continental white metal hinged trinket box, with scaled decoration and velvet lined interior, 800 mark to base, 15cm wide x 12cm high  
£40 - 60 †

**194**  
A late Victorian silver salver, having shell and foliate cast border, Sheffield 1900, 30cm dia. overall, 19oz  
£250 - 300 †

**195**  
A silver dressing table tray, of shaped rectangular form having spot hammered decoration and vacant cartouche, Chester 1905, 30.5cm x 23cm, 13oz  
£150 - 200 †

**196**  
A pair of Georgian silver bright cut decorated sugar tongs; and an Art Deco design silver engine turned cigarette case. total weight approx. 5oz  
£60 - 80 †

**197**  
A pair of plated serving spoons, by Alex Clarke, case AF  
£20 - 30 †

**198**  
A small silver presentation card tray, bearing inscription within a pie crust and shell decorated border, raised on three ball and claw feet, London 1970, 20cm dia., 10oz  
£150 - 250 †

**199**  
A silver presentation salver, having pie crust border raised on four scroll feet, Sheffield 1922, 30cm dia., 29oz  
£400 - 600 †

**200**  
A pair of Louis XIV style ornate silver plated Girandoles, having mask and foliate scroll decoration, each fitted with a triple candle sconce of urn shape on acanthus scroll arms, 60cm high overall. Formerly from Loudham Hall Auction, 2nd June 2007  
£300 - 500 †

**201**  
A Victorian silver Fiddle, Shell and Thread pattern sifter spoon, London 1849  
£30 - 50 †

**202**  
A late Victorian mahogany cased set of twelve each plated fruit knives and forks  
£50 - 80 †

**203**  
A cased set of Chinese export silver fish knives and forks, by Wang Hing  
£350 - 450 †

**204**  
A circular silver and tortoiseshell trinket box, by Cooper Bros. Birmingham 1912, 8cm dia.  
£80 - 120 †

**205**  
A pair of cut glass and silver mounted salts, in the form of swans, with hinged folding wings  
£60 - 80 †

**206-214**  
No Lot



Lot 194

## Jewellery

**215**  
An early 20th Century 9ct gold bar brooch, set seed pearls; another bar brooch set single pearl; and an Art Nouveau design bar brooch set central amethyst and seed pearls  
£80 - 120 †

**216**  
A small 9ct gold turquoise set bar brooch, dated 25th April 1922; a 15ct gold bar brooch hung with seed pearl and turquoise set doves; a pair of yellow metal hook earrings and a single 9ct gold pearl set screw earring  
£100 - 200 †

**217**  
A Wahl small fountain pen, having 14ct gold nib and gold filled case, 8cm  
£40 - 60 †

**218**  
An oval 9ct gold and citrine mounted brooch, total weight 7.6gms; and a 9ct gold mounted cameo brooch decorated with head and shoulders study of a maiden, total weight 5.4gms  
£60 - 100 †

**219**  
A 15ct gold Art Nouveau pendant, set amethyst, seed pearls and emeralds, hung to a fine link chain, total weight 8.5gms  
£100 - 200 †

**220**  
A 9ct gold bangle, having engine turned decorated to the outside, 13.5gms  
£250 - 350 †

**221**  
An 18ct gold ladies fob watch, having Roman numeral hatched dial with foliate scroll decoration and vacant cartouche to the back panel, bears inscription to the inside, total weight 34gms  
£300 - 400 †

**222**  
A George V gold half sovereign, 1912  
£180 - 200 †



Lot 219



Lot 223

**223**  
A Charles Horner, Chester 1909 silver and enamel pendant on later chain (small enamel loss) £40 - 60 †

**224**  
A Merle Bennet & Co. 9ct gold brooch, circa 1900, 4g £100 - 150 †

**225**  
A 9ct gold and turquoise Art Nouveau brooch, circa 1900, 3g total weight £120 - 180 †



Lot 226

**226**  
A continental 800 mark white metal and Plique a Jour Egyptian Revival winged insect brooch, circa 1900, 10cm long £200 - 300 †

**227**  
A white metal and diamond set line bracelet, centre stone 5mm x 6mm, 17.5cm long, 13g total weight £400 - 600 †

**228**  
A Cyma Triplex watch £20 - 40 †

**229**  
An Omega Constellation Chronometer gent's wrist watch £250 - 300 †

**230**  
John McCrerrick, horseshoe ruby set ring; ring size 4, 10.5g total weight; together with a signed photograph of John McCrerrick £800 - 1,000 †

**231**  
An antique yellow metal diamond shaped pendant, inset with a cornelian amethyst coloured stone within a filigree work border, 9.5g total weight £500 - 800 †

**232**  
A gold and malachite set bracelet £100 - 150 †



Lot 236



Lot 225

**233**  
A yellow and white metal panther brooch, set with diamond and coloured stone, 11g total weight £200 - 300 †

**234**  
A yellow metal and white metal opal and diamond set bar brooch, and white metal, 7.2g, 5.3cm, diamond approximately 0.25 carat each £500 - 800 †

**235**  
A gold and solitaire diamond set gents ring, with leaf decorated shoulders, size V, 11g total weight, diamond approximately 7mm dia. £800 - 1,200 †



Lot 234

**236**  
A 9ct gold wrist watch, with mesh bracelet retailed by the Goldsmiths & Silversmiths Company, No. 675040, total weight 44.8gms £400 - 600 †

**237**  
A silver gilt medallion, with inscription 'My True Love Sent To Me A Partridge In A Pear Tree'; a silver pin cushion in the form of a ladies shoe; another in the form of a clog; and a hexagonal silver pill box with foliate engraved decoration £60 - 80 †

**238**  
A yellow metal and chip diamond encrusted heart shaped brooch, 2.6cm long, 8g total weight £100 - 200 †

**239**  
A Tiffany & Co., 18ct gold and diamond half eternity ring, 3.5gms, ring size N/O £300 - 400 †

**240**  
An 18ct gold Italian woven bracelet, 22gms, 19cm long £800 - 1,200 †



Lot 240

**241**  
An 18ct gold and pearl set bracelet,  
19cm long total weight 69gms  
£2,500 - 3,500 †

**242**  
A string of well matched pearls,  
secured with a 14K white gold  
diamond and pearl clasp  
£100 - 200 †

**248**  
A 18ct white gold sapphire and  
diamond set ring, ring size L,  
3.2gms total weight £200 - 400 †



Lot 241

**260**  
A ladies Astor 14ct gold cased  
wrist watch, with 9ct gold strap  
and clasp, 9.5gms total weight; a  
ladies 9ct gold cased Accurist wrist  
watch with 9ct gold strap and clasp,  
10.5gms £100 - 200 †

**261**  
A ladies Tissot 9ct gold cased wrist  
watch, with 9ct gold strap and  
clasp, 21gms total weight; and a  
Stowa 14ct gold cased wrist watch  
with gold plated strap £300 - 400 †

**262**  
A ladies Princess 18ct gold wrist  
watch, with 18ct gold expanding  
strap and clasp, 15.5gms total  
weight; and a 9ct gold cased wrist  
watch with 9ct gold expanding strap  
and clasp, 16gms total weight  
£300 - 400 †

**254**  
A 9ct gold necklace, with yellow  
metal mounted charm, marked  
750-, 10gms total weight  
£100 - 200 †

**255**  
A 9ct gold necklace, 2gms; a  
diamond set pendant marked 18ct,  
3gms; a 9ct gold necklace with heart  
pendant, 4.5gms and a 9ct gold  
pearl pendant hung to a yellow  
metal fine link chain, 3.5gms  
£300 - 400 †

**243**  
A vintage white metal and  
diamond set bracelet, marked 14kg  
10.5g £600 - 800 †

**249**  
A yellow metal and white metal  
necklace, marked 585, 22gms total  
weight £300 - 400 †

**244**  
A Cartier red and gilt watch box,  
code No. COWA0034 in outer  
cardboard container £40 - 60 †

**250**  
A 9ct gold belcher link necklace,  
10.5gms £150 - 250 †



Lot 245



Lot 246

**256**  
A diamond bar brooch, in yellow  
and white metal mount, 3.2gms,  
approx. 5.5cm £100 - 200 †

**257**  
A yellow metal ring, set with  
diamonds and blue stone, ring size  
M/N, 1.8gms; and a 9ct gold ring  
set with blue and white stones, ring  
size M/N, 2.8gms £100 - 200 †

**263**  
A 9ct gold and diamond cluster  
ring, ring size J/K, 3gms total  
weight; and an 18ct gold and  
diamond cluster ring, ring size  
M/N, 4.2gms total weight  
£100 - 200 †

**245**  
A sapphire and diamond set bar  
brooch, with white metal mount,  
3.5gms total weight, approx. 6.2cm  
£200 - 300 †

**251**  
An Italian yellow metal necklace,  
marked 585, 7gms £100 - 200 †

**246**  
A diamond floral spray brooch,  
with white metal mount, 7gms total  
weight, 4cm in extremes  
£200 - 300 †

**252**  
A 9ct gold necklace, 2gms; and an  
Italian 9ct yellow and white gold  
bracelet, 5.5gms total weight  
£80 - 120 †

**247**  
A pair of 18ct gold and diamond  
set drop earrings, the drops set  
with diamonds and coloured stones,  
4.8gms total weight, 2.8cm  
£200 - 300 †

**253**  
A yellow metal necklace, marks  
rubbed; a 9ct gold bangle 5.5gms  
and a yellow metal and seed pearl  
necklace AF, 2.5gms £100 - 200 †

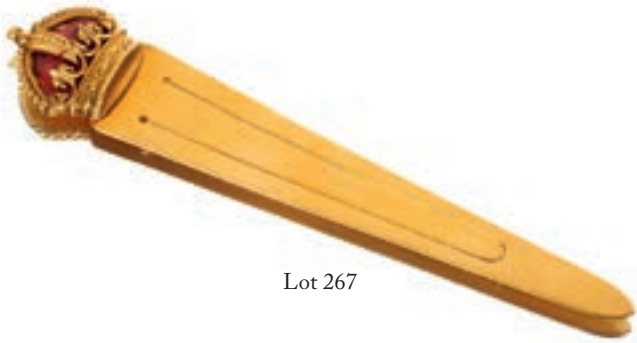
**258**  
A 9ct gold and diamond set ring,  
ring size N. 3.5gms total weight  
£100 - 200 †

**259**  
A Chalet 9ct gold cased wrist  
watch, AF; a Brabbingtons  
'Renown' 9ct gold cased wrist watch  
and an 18ct gold cased wrist watch  
£200 - 400 †

**264**  
A 9ct gold memorial brooch; two  
yellow metal memorial brooches,  
and a yellow metal and white metal  
diamond set brooch £100 - 200 †

**265**  
A yellow metal (marked rubbed)  
and coral set ring, ring size P, 2gms  
total weight; and a yellow metal  
pearl set ring, rings size L, 2gms  
total weight £80 - 120 †

**266**  
A yellow metal mounted cameo  
brooch, tested as 9ct gold, 15gms  
total weight £100 - 200 †



Lot 267

**267**  
A yellow metal bookmark, with enamel decorated crown, tested as 14ct gold, 8gms total weight, in case by F.W. Hartley Ltd, 170 Piccadilly, London, and bearing piece of paper, 'The Late queen Alexandra's bookmark' £150 - 250 †

**268**  
A yellow metal snap bangle, engraved '16th Annual Prize Meeting, Won By F.A. Conyers', tested as 14ct gold with 9ct gold safety chain, 28gms £500 - 800 †

**269**  
A yellow metal snap bangle, engraved '16th Annual Prize Meeting, won by F.A. Conyers' tested as 14ct gold with 9ct gold safety chain, and set with approx. 0.25carat diamond, 23gms total weight £400 - 600 †



Lot 268



Lot 269



Lot 270

## Ceramics & Glass

**270**  
A 19th Century Chinese porcelain bottle vase, the mustard ground body with eight applied immortals and two to the neck, six character reign mark to base, 38cm high with wooden base £300 - 500 †

**271**  
A Doulton Burslem baluster vase, decorated flower heads, heightened in gilt, 37cm high and a matching bowl with flower and insect decoration, 26cm dia. £60 - 80 †

**272**  
A pair of Dresden five light candelabra, with floral encrusted decoration, the columns with street vendors, 58cm high £80 - 120 †

**273**  
A large Continental pottery table centrepiece, in the form of a courting couple sat around a well, hanging floral decoration and branches above, 60cm high £40 - 60 †

**274**  
A blue and white Delft ware bowl, having shaped border and fluted body decorated foliate sprays, 28.5cm £60 - 80 †

**275**  
A Victorian pink opaque glass oil lamp, of baluster form raised on gilt metal scroll base complete with white opaque shade and chimney, 77cm high overall £40 - 60 †

**276**  
A rare pair of 18th Century Vienna porcelain ornithological decorated five branch tulip vases, (one in need of restoration), 17.5cm high £40 - 60 †

**277**  
**Eight 18th Century blue and white Chinese porcelain plates,** decorated pagodas and river scenes, 20cm dia. £40 - 60 †

**278**  
**Three large blue and white Chinese porcelain bowls,** having floral decoration, seal mark to bases, 18cm dia. £40 - 60 †

**279**  
**Six large Chinese porcelain blue and white cups and saucers,** and one spare saucer decorated with pagodas and river scenes £40 - 60 †

**280**  
**Four various 18th and 19th Century Chinese porcelain bowls,** various patterns and marks to bases, the largest 11.5cm £40 - 60 †

**283**  
**Two small Chinese tea bowls,** decorated in brightly coloured enamels with figures, symbols and script, 6cm dia. x 4.5cm high; and a smaller example of pedestal form AF £40 - 60 †

**284**  
**A 19th Century Japanese Imari charger,** decorated in the traditional palette, with flowers, figures and symbols, 41cm dia. £40 - 60 †

**285**  
**A Chinese blue and white Gu shaped vase,** decorated figures, rocky landscapes and script, 38cm high AF £60 - 100 †

**286**  
**A Quimper type shallow dish,** decorated with a farm worker carrying a staff, inscribed 'Auvergne' and initialled H.B., 21cm dia. £20 - 40 †



Lot 302

**281**  
**A pair of KPM cabinet plates,** having foliate decoration within shaped link pattern borders, 24.5cm dia. £40 - 60 †

**282**  
**A Venetian tea plate,** with lace pattern on blue ground; a Victorian plate with ribbon decoration; a Royal Copenhagen floral decorated plate; a Meissen pattern ribbon plate and an Aynsley for Maple & Co. decorated tea plate £40 - 60 †

**287**  
**A pair of 19th Century Continental porcelain posy vases,** the foliate spray decoration heightened in gilt, 10cm high £30 - 50 †

**288**  
**A pair of 19th Century Parian ware figures,** of semi-draped ladies, 38cm high £40 - 60 †

**289**  
**A pair of 19th Century Continental porcelain candlesticks,** having enamelled floral decoration, 34cm high (one AF) £40 - 60 †



Lot 285

**290**  
**A Copenhagen porcelain vase,** decorated with maidens and flowers; the panels with foliate spray decoration heightened in gilt, 24cm long x 19cm high £40 - 60 †

**291**  
**A pair of late 19th Century Dresden style baluster vases and covers,** the panels decorated with romantic scenes and foliate sprays heightened in gilt, 39cm high £60 - 100 †

**292**  
**An extensive Wedgwood 'Renaissance' pattern dinner service,** to include numerous size plates, tureens, sauce boat and stand, platter and meat dish etc. £300 - 400 †

**293**  
**A John Constable Bi-Centenary commemorative two handled glass vase,** decorated Mill-on-the-Stour, Charles H. Gill 7/25; and another decorated with East Bergholt Church, John Gill 9/25 £40 - 60 †

**294**  
**A pair of 19th Century heavy faceted glass candlesticks,** having castellated drip pans and bases, 25cm high £30 - 50 †

**295**  
**A Minton part tea set;** various other Victorian and later teacups and saucers etc. £60 - 80 †

**296**  
**A pair of 19th Century Augustus Rex style bottle vases,** the lids with raised foliate motif above a puce scale ground and panels decorated rural scenes, 33cm high, AF £60 - 80 †

**297**  
**A pair of 19th Century German porcelain three light candelabra,** with floral encrusted and cherub decoration, 27cm high, AF £40 - 60 †

**298**  
**A 19th Century German porcelain blanc de chine candlestick,** decorated with cherubs and flowers, 19cm high, AF £30 - 50 †

**299**  
**A Victorian 'Imperial Stone' part dinner service,** comprising plates, soup dishes, two tureens and meat plate £40 - 60 †

**300**  
**A Nanking Cargo bowl,** 15cm dia. (ex-Christies lot 3130) and a Nanking Cargo plate, having foliate decoration, 23cm dia. (ex Christies lot 3645) £80 - 120 †

**301**  
**A 19th Century pedestal sauce tureen,** decorated in the Oriental manner; a Victorian pottery comport with floral decoration; a Victorian Staffordshire spaniel ornament and a cut glass fruit bowl with silver rim £40 - 60 †



Lot 304

**302**  
An iridescent glass and silvered overlaid Art Deco design vase, 18cm high £40 - 60 †

**303**  
A glass saucer goblet, richly decorated with gilded vine leaves, 17cm dia. 20cm high; and a smaller similar with coloured berry decoration, 16cm dia. 9cm high £30 - 50 †

**304**  
A Chinese circular blue and white shallow dish, decorated with dignitaries and other figures within a bat and insect decorated border, four character mark to the base, 24cm dia.; and a Chinese blue and white square dish decorated pagodas, 22cm £60 - 80 †

**305**  
A pair of Delft square section blue and white vases and covers, 20cm high; and a blue and white baluster vase and cover in the Oriental style, 17cm high £20 - 40 †

**306**  
A Chinese blue and white ginger jar and cover, having prunus decoration, four character mark to base, 15cm high £60 - 80 †

**307**  
A large Chinese blue and white jar and cover, decorated prunus and objects, 30cm; together with a hardwood circular stand £100 - 200 †

**308**  
A pair of Chinese blue and white baluster vases and covers, decorated prunus, 4 character mark to the bases, 29cm high £100 - 200 †

**309**  
A Chinese ginger jar and cover, decorated with prunus and figures in a boat on a lily pond, lid AF; and two carved hardwood pot stands £40 - 60 †

**310**  
A large late 18th Century Yorkshire pearlware plate, printed in under glazed blue with 'A Long Eliza' figure in a chinoiserie garden landscape, 35cm wide £60 - 100 †

**311**  
A Ming Dynasty Wan-Li Period (1573-1620) blue and white shallow dish, painted with birds within panels and stylised foliate border, 38cm dia. (glaze loss due to sea water) £100 - 200 †

**312**  
A late 19th Century Chinese blue and white ovoid vase, painted with figures in a landscape, 16cm high; and a turquoise glazed Chinese pottery wine pot, having piped decoration of dragon and phoenix within a Greek key border, 17cm high £40 - 60 †

**313**  
A large 19th Century Chinese porcelain blue and white ginger jar, painted with peonies and rock work, 23cm high £40 - 60 †

**314**  
An early 19th Century blue and white transfer decorated meat plate, with floral border and fruit to the centre, 36.5cm wide £30 - 50 †

**315**  
An early 19th Century Enoch Wood & Sons Staffordshire, dark blue transfer printed platter, inscribed 'Cape Coast Castle On The Gold Coast, Africa' shell decorated border, 41.5cm wide £180 - 220 †

**316**  
A Chinese porcelain rectangular plaque, painted with a pair of red crowned Asian cranes in a landscape within wooden frame, 22cm x 27.5cm £30 - 50 †

**317**  
An 18th Century Chinese porcelain under glazed blue and iron red plate, 21.5cm dia.; and a 19th Century blue and white Chinese miniature vase, 9.5cm high £40 - 60 †



Lot 307



Lot 308

**318**  
An 18th Century Chinese famille rose porcelain bowl, painted with urns and flowers, 14cm dia.; and an 18th Century blue and white porcelain shallow bowl, painted with flowers in a basket, 17cm dia.  
£60 - 80 †

**319**  
A pair of Chinese porcelain double gourd vases, painted with bats, 11cm high; and an unusual Oriental porcelain whistle in the form of a reclining boy, 7.5cm long  
£40 - 60 †

**320**  
A late 19th Century Dresden porcelain miniature lidded tankard, and a similar late 19th Century Ormolu mounted hand painted hinged porcelain box, 7cm  
£60 - 80 †

**321**  
A pair of blanc de chine figural posy vases; and a blanc de chine table centrepiece decorated with cherubs at a forge  
£40 - 60 †

**322**  
A French Art Deco glass vase, with sunburst decoration, 27cm high; a heavy cut glass vinegar bottle; a dimple glass carafe; a glass pedestal sweetmeat dish; a moulded glass nursery plate and a pair of ornate cut glass figure bowls and stands  
£40 - 60 †

**323**  
An Orrefors ruby glass bowl, 19cm dia.; a cranberry pedestal glass dish; four other pieces of cranberry glassware; an amethyst glass baluster vase; two amethyst drinking glasses and a rule  
£60 - 80 †

**324**  
A Victorian hour glass shaped decanter, with silver mount, 32cm high and a cut glass decanter with faceted stopper, 33cm high  
£40 - 60 †

**325**  
An unusual Oriental porcelain stick stand, the circular top having six divisions, drip pan below, all over bird and floral decoration, 57cm high x 34cm dia. AF  
£100 - 150 †

**326**  
A pair of delft baluster vases and covers, surmounted by crown shaped knob finials, all over floral and sailing barge decoration, 30cm high  
£100 - 200 †

**327**  
A pair of 18th Century Delft vases, of octagonal shape, the foliate panels decorated with rural scenes  
24cm high  
£100 - 200 †

**328**  
A green Moorcroft pottery preserve pot, with silver lid  
£40 - 60 †

**329**  
A Dresden porcelain figure group, depicting young children feeding chicken, 13cm high and another of two sweethearts exchanging posies, 16cm high  
£40 - 60 †

**330**  
A Naples porcelain figure, of a reclining nude warrior, 15cm  
£40 - 60 †

**331**  
A 19th Century humorous Staffordshire figure, 'Roger Gilles'  
£40 - 60 †

**332**  
A Royal Worcester figurine, "Fridays Child Is loving and Giving" No.3523, 15cm high  
£30 - 60 †

**333**  
A pair of Doulton Morrisian baluster vases, decorated dancing girls and musicians, 22cm high  
£30 - 50 †

**334**  
A fine quality Victorian opaque glass vase, with enamel decoration of birds, butterflies and foliage, 19.5cm  
£40 - 60 †

**335**  
A Chinese Rouleau shaped vase, decorated dogs of fo, flaming pearls and script, seal mark to base, 27cm high  
£60 - 100 †

**336**  
A Royal Worcester porcelain jug, of tapering form with painted foliate decoration heightened in gilt on a blush ivory ground, 21cm high  
£40 - 60 †

**337**  
A pair of German porcelain comports, in the form of maidens holding urns aloft, raised on circular fluted bases, 32cm high  
£60 - 80 †



Lot 336

**338**  
A pair of Naples porcelain figures, depicting street beggars, the largest 17cm high  
£40 - 60 †

**339**  
A pair of Dresden porcelain figures, depicting street vendors, 15cm high; and a Spode Chelsea figure of a seated man and dog, 15cm high  
£40 - 60 †

**340**  
A pair of 19th Century Continental porcelain figures, depicting a lady and gallant reclining on large baskets, 27cm high  
£60 - 80 †

**341**  
A collection of Royal Crown Derby porcelain, including comport, oval serving dish, various plates, three cups and saucers, sugar bowl etc.  
£300 - 400 †

**342**  
A pair of 20th Century Celadon ground vases, the body of each finely decorated with leaves and lappets, the glaze finely painted with various figures in bright enamels, 36cm high including carved and pierced wooden stands  
£150 - 250 †

**343**  
A Japanese blue and white plate, decorated with exotic birds on blossom laden branches, seal mark to base; a Japanese blue and white charger decorated with garden scenes; a Japanese shallow bowl with deer and floral decoration heightened in gilt with seal marks to base; and a modern Japanese shallow bowl decorated with carp  
£30 - 50 †

**344**  
An unusual 18th / 19th Century porcelain vase, the ribbed body painted with crowned armorials, surrounded by swags of flowers, 28cm high  
£40 - 60 †

**345**  
A 19th Century Chinese crackle glazed ovoid vase, one panel painted with butterflies and bird amongst flowers, the other with precious objects, the vase painted in Famille Verte colours, 29cm high  
£150 - 250 †

**346**  
A 19th Century rectangular jade Chinese table screen, on carved and pierced wooden stand, 39cm high  
£100 - 150 †



Lot 361

**347**  
A 20th Century Chinese porcelain Mei Ping shaped vase, painted in underglaze blue and copper, with red dragons chasing a flaming pearl and leaping fish, 31cm high, seal mark to base £150 - 200 †

**348**  
A late 19th Century Chinese porcelain lidded ovoid blue and white jar, painted with figures in various pursuits, 31.5cm high £80 - 120 †

**349**  
A 19th Century Chinese porcelain Canton vase, well painted in the traditional manner with figures, birds, foliage and butterflies around central panels, figures in interior and exterior settings having bulbous body and flared neck, 39.5cm high £250 - 350 †

**350**  
A 19th Century Chinese porcelain Famille Noire and yellow ground Yen-yen vase, painted with flowers, precious objects and figures, 37.5cm high £150 - 250 †

**351**  
A Japanese Satsuma pottery Koro and cover, having all over decoration of figures and geometric designs with seated dog finial, 20cm high £200 - 300 †

**352**  
Six Royal Crown Derby dinner plates, in the Imari pattern; a pair of smaller plates and an octagonal cake plate £40 - 60 †

**353**  
A Royal Crown Derby baluster ewer, decorated in the Imari pattern, handle, neck and base richly decorated in gilt, 26cm high; a Royal Crown Derby coffee cup and saucer, tea cup and saucer, and a pin dish £40 - 60 †

**354**  
A rare pair of pottery Disraeli spaniels, with baskets in their mouths, black and white decorated, 20cm high £250 - 350 †

**355**  
A rare Staffordshire figure, 'Death of Nelson' on the deck of H.M.S. Victory, circa 1850, 20cm high £80 - 120 †

**356**  
Royal Subjects, a small pair of Staffordshire figures of The Prince Consort and Queen Victoria with baby, circa 1850, 14cm high; and a large standing figure of Queen Victoria, similar period, 28cm high £60 - 80 †

**357**  
An early 19th Century Newhall porcelain tea pot, with cups, saucers and a plate £20 - 30 †

**358**  
'Jack Tar', Staffordshire Toby jug, 29cm high £30 - 50 †

**359**  
An early 18th Century Chinese porcelain famille rose punch bowl, painted with precious objects, flowers etc. 26cm dia. and a smaller bowl painted with panels of flowers, 18th Century underglaze blue seal mark to base, 19.5cm dia. £40 - 60 †

**360**  
A mid-18th Century Meissen teapot, decorated with a large tulip and rose, crossed swords mark to base, 12cm high and a Meissen twin salt with central ring handle, painted with exotic birds £80 - 120 †

**361**  
A pair of Chinese blue and white plates, the central panels decorated with figures in an exotic garden setting, character marks to the underside, 21cm dia.; and four Japanese tea plates £60 - 80 †

**362**  
A 19th Century English porcelain fruit bowl, having floral decoration heightened in gilt, 26cm dia. AF £20 - 40 †

**363**  
A Doulton cream stoneware vase, with ringed decoration, impress marks to the base, 20cm high £40 - 60 †

**364**  
A Royal Lancastrian baluster vase, decorated green and grey running glazes, impress mark and signature to base, initialled E.T.R. No.153, 23.5cm high £80 - 120 †

**365**  
An 18th Century Bristol Delft bowl, with all round floral decoration, 26.5cm dia. £300 - 400 †

**366**  
A Lalique glass circular dish, decorated nude female swimmers, signed R. Lalique, France, 27.5cm £400 - 600 †





Lot 367

**367**  
**Dame Lucy Rie 1902-1995**, an oval  
cream stoneware pottery bowl,  
27cm dia. x 16cm high  
£3,000 - 4,000 †



Lot 372



Lot 375

**368**  
Six Royal Crown Derby coffee cans, and seven saucers; a Victorian Oriental decorated plate; a Paragon bone china wall plate; and a Doulton Series ware plate 'Zunday Zmocks' £30 - 60 †

**369**  
A collection of 18th and 19th Century Chinese and English porcelain blue and white tea bowls; an 18th Century Chinese bat wing decorated saucer; a willow pattern bowl and saucer and a green glazed Chinese ginger jar £100 - 150 †

**370**  
A Tuscan bone china tea set, and part dinner service white glazed with gilt Greek Key borders, manufactured for Harrods £50 - 80 †

**371**  
A pair of cream Terre D'Hautaniboul pendant lights, 63cm high, 33cm dia. £100 - 200 †

**372**  
A Staffordshire pulpit figure group, 'The Vicar and Moses', 25cm high £30 - 50 †

**373**  
A Chinese blue and white export ware bowl; a 19th Century plate with basket on flowers decoration, character mark to the base; a small saucer dish with bird on a branch decoration beneath calligraphy; a 19th Century Chinese blue and white octagonal shallow dish decorated peony and fence pattern and a collection of five various 18th / 19th Century tea bowls (some damage) £250 - 350 †

**374**  
A pair of Art Deco glass and chrome Plafonnier, in the form of clam shells, 32cm dia. £80 - 120 †

**375**  
A late 19th Century Islamic Khorasan (Afghanistan), ceramic painted pottery bowl, depicting a figure on horseback, 27cm dia. £40 - 60 †

**376**  
An Ulster Pottery Co. blanc de chine cream jug, of shaped form having beast handle, 16cm £100 - 150 †



Lot 377

## Objects & Collectables

**377**  
An Ornate Eastern dagger, the curved blade with gilded foliate decoration beneath a brass hilt, the handle and scabbard in carved horn with white metal mounts, 43cm long. This item can only be purchased by someone over the age of 18 and ID verification may be required. Face to face collection only.

£200 - 300 †



Lot 378

**378**

**The 1772 Resolution & Adventure medallion**, in silver and the Arctic Discoveries medallion 1818,-1855, cased. Provenance by descent from the family of John Cleveley the Younger (1747-1786) marine artist £6,000 - 8,000 †



Lot 391



Lot 392



**379**  
A Dunhill gold plated lighter,  
No.12857 £20 - 40 †

**380**  
A Victorian burr walnut two  
compartment tea caddy, 24cm  
long £40 - 60 †

**381**  
A white glazed classical bust of  
David, raised on a black socle base,  
53cm high £100 - 150 †

**382**  
A white glazed classical bust of  
Apollo, raised on black socle base,  
56cm high £100 - 150 †

**383**  
An Edwardian inlaid mahogany  
mantel timepiece, by Frederick  
Dixon, Oxford Street, the domed  
case raised on brass disc feet, 29cm  
high £30 - 50 †

**384**  
An early 20th Century walnut  
cased mantel timepiece, by  
Mappin & Webb, 16cm high  
£30 - 50 †

**385**  
A pair of Carl Zeiss folding opera  
glasses, retailed by J.H. Steward,  
London in leather carrying case  
£40 - 60 †

**386**  
A Hardy Smuggler rod, in leather  
case £225 - 250 †

**387**  
An antique oak scrolling corbel,  
with cherub mask and leaf  
decoration, 26cm £250 - 350 †

**388**  
A brass cased carriage timepiece,  
retailed by Munsey & Co. Ltd.  
Cambridge, complete with winding  
key, 16.5cm high with handle up  
£40 - 60 †

**389**  
A French brass cased carriage  
clock, with movement striking on a  
gong, 17cm high with handle up,  
the leather mounted carrying case  
AF £80 - 120 †

**390**  
A 19th Century brass cased  
carriage alarm clock, having foliate  
engraved decorated case, the white  
porcelain Roman numeral dial  
inscribed Marshall & Fils Paris,  
17cm high with handle up,  
contained in a leather mounted  
carrying case, complete with key  
£100 - 200 †

**391**  
After The Antique, a bronze  
Marley horse and groom figure,  
19cm high £40 - 60 †

**392**  
Capoy, a pair of bronze figures  
depicting cherubs one with bow the  
other with arrows on marble bases,  
30cm high £100 - 200 †

**393**  
A 19th Century bronze censer, the  
lid surmounted by a winged cherub  
raised on beast, mask and claw feet,  
8cm high; and a smaller similar the  
lid surmounted by an eagle  
decorated semi-naked figures and  
raised on claw feet, 17cm high  
£80 - 120 †

**394**  
A decorative onyx baluster vase, of  
agate colour, 28cm high £20 - 40 †

**395**  
A bronzed table lamp, in the form  
of a miner with pick axe, 55cm high  
£100 - 150 †



Lot 393



Lot 395



Lot 396

**396**  
A large 19th Century bronze baluster vase, having raised foliate decoration, signature to base, 36cm high £400 - 500 †

**397**  
A 19th Century brass and Pietra Dura marble inlaid desk stand, the enamelled urn shaped inkwell flanked by cherubs, 24.5cm AF £40 - 60 †

**398**  
A 19th Century brass cased four glass mantel clock, the circular enamel Roman Numeral dial with visual escapement, mercury adjust pendulum, 28cm high £100 - 150 †

**399**  
A carved mahogany ships tiller handle, 'Lady Muriel' with fluted decoration and dogs head terminal; and a Chief Officers Log Book, from the Lady Muriel £40 - 60 †

**400**  
A large 18th Century rustic earthenware cooking pot, with loop handles, 35cm wide overall x 25cm high; a smaller example and a similar baluster pot, 25cm high £80 - 120 †

**401**  
A French carved wooden bread platter, with inscription, 46cm dia. £30 - 50 †

**402**  
A 19th Century carved wooden crucifix, in shield shaped plush lined frame, 37cm x 24cm overall £70 - 100 †

**403**  
A 19th Century mahogany velvet lined storage box, fitted sunken brass handles, complete with key, 33cm wide x 27cm deep; a Victorian walnut bone and brass mounted sewing or trinket box (interior missing), 27cm wide x 20cm deep; a cased set of mother of pearl handled fruit knives and a cased set of bone handled knives £40 - 60 †

**404**  
A rosewood cased and inlaid Swiss music box, playing ten airs, 60cm wide x 29cm deep x 19cm high £200 - 300 †



Lot 399



Lot 397



Lot 406

**405**  
A Bells In View Swiss box, with bird and butterfly strikers, playing eight airs, cylinder 16cm, original tune card contained in a floral marquetry inlaid case, 48cm wide x 27cm deep x 22.5cm high  
£300 - 400 †

**406**  
A 19th Century white plaster figure group, after Uffizi, 'The Pankratiasts', 53cm long x 43cm high  
£200 - 400 †

**407**  
Believed Cognac 1811 green glass bottle, embossed 1811 and Crown, having seal and wooden cellar bin tag, 26cm high AF  
£100 - 200 †

**408**  
A boxed Victorian 'Wheatstone' concertina No.7932, corresponds to Wheatstones ledger c.1049 page 72, dating the instrument to 13th October 1855  
£300 - 500 †

**409**  
Josef Lorenzl, cold painted bronze figure of a dancing girl, signed, on a stepped marble plinth, 27cm high  
£600 - 800 †



Lot 407

**410**  
Manner of Josef Lorenzl, cold painted bronze figure of an Art Deco period dancing girl, raised on a marble domed base, 23cm high  
£150 - 200 †

**411**  
Josef Lorenzl, cold painted bronze and ivory figure of a dancing girl, raised on green onyx column, 31cm high overall  
£1,000 - 1,500 †

**412**  
Franz Bergmann, cold painted study of an eagle, wingspan 36cm on later circular wooden plinth  
£400 - 600 †



Lot 409

**413**  
After The Antique, bronze figure of a naked gladiator with sword and shield, raised on a green marble plinth, 26cm high overall  
£60 - 100 †

**414**  
A 19th Century Japanese bronze jardinière, of baluster form with raised decoration of birds and foliage, 32cm dia. x 24cm high  
£60 - 80 †



Lot 410



Lot 411



Lot 412

**415**  
A pair of bronze harvesting cherubs, raised on marble plinths, 22cm high £300 - 400 †

**416**  
A late 19th Century mahogany and satin wood inlaid banjo barometer, by A. Ames, Goat Lane, Norwich £40 - 60 †

**417**  
A 19th Century mahogany cutlery tray, with brass carrying handle, 36cm x 31cm £30 - 50 †

**418**  
An antique white metal combined seal and Holy water stoop, in the form of Madonna and Christ Child, 8cm long £120 - 160 †

**419**  
A mahogany and inlaid banjo barometer, 95cm £40 - 60 †

**420**  
A mahogany cased stick barometer, by Rowell of Oxford, 93cm £50 - 80 †

**421**  
A brass hand bell, with turned wooden handle; a brass door stop; a trivet; a chamber stick; toasting fork etc. £30 - 50 †

**422**  
A George III mahogany stick barometer, having silvered dial, 92cm AF £40 - 60 †

**423**  
A silver pigeon medallion key ring, monogrammed £20 - 30 †

**424**  
Bobby Moore, an autographed British Club Bahrain, Concorde restaurant menu, also signed by Gordon Banks and a Berger Paints five a side tournament programme 18th January 1984 Bahrain, and a commemorative newspaper £80 - 120 †

**425**  
A Smiths Yachting timer £20 - 40 †

**426**  
An Asafo vintage flag, 93cm x 147cm £500 - 800 †

**427**  
A Waltham U.S.A. 'Equity' half hunter pocket watch, in a Dennison watch case £60 - 80 †

**428**  
A silver cased verge movement pocket watch, London maker, the case Hallmarked for 1897, complete with key £60 - 80 †

**429**  
A Swiss made WWI pocket watch with five dials, moon phase, calendar etc. £100 - 150 †

**430**  
A large silver cased verge movement pocket watch, by F.H. Peplow, Coalville, Chester 1890, complete with key £80 - 120 †

**431**  
A silver pocket watch by J.W. Benson, 'The Ludgate' London 1886, complete with key £40 - 60 †

**432**  
An antique 925 silver half hunter pocket watch £80 - 20 †



Lot 415

**433**  
A 'Limit' silver cased pocket watch, Birmingham 1923 and another pocket watch in a fine silver case, complete with key £60 - 80 †

**434**  
The Express English Lever silver cased pocket watch, Birmingham 1903; and a silver cased Waltham U.S.A. 'Marquis' pocket watch, the case Birmingham 1915 £60 - 80 †

**435**  
A silver cased pocket watch, Birmingham 1886 and an Elgin Watch Co. of Illinois gold plated full hunter £80 - 120 †

**436**  
An Art Deco alabaster pendant light shade, with hanging chains and ceiling fitment, 36.5cm dia. £100 - 200 †

**437**  
A large and unusual brass fireside companion stand, the pierced helmet shaped top surmounted by a ring handle, 105cm high; and a smaller similar £40 - 60 †

**438**  
A Victorian brass and wire work D shaped fender, raised on ball feet, 88cm wide £30 - 50 †

**439**  
A 16th Century copper charger, with central boss flanked by Latin inscriptions, traces of gilding to the reverse, 49cm dia. £200 - 300 †

**440**  
A small late 18th / early 19th Century Chinese circular bronze censor, of squat form with lion head bosses, Xuande seal mark to base, 14cm dia. overall £150 - 250 †

**441**  
A bronze pestle and mortar, in the 17th Century style £30 - 60 †

**442**  
A bronze figure, of a young boy wearing britches, 19cm high £40 - 60 †

**443**  
A bronze study of The Arc de Triomphe, on oval black onyx base, 18cm high x 20cm long overall £60 - 80 †



Lot 427



Lot 443



Lot 444

**444**  
A bronze figure of a horse and jockey, after Mene, 26cm long x 22cm high £40 - 60 †

**445**  
A bronze figure of a horse and jockey, after Mene, 28cm long x 20cm high £40 - 60 †

**446**  
A French gilded spelter bust of a young maiden, raised on onyx plinth, 30cm high £40 - 60 †



Lot 446

**447**  
A 19th Century Chinese cloisonné tea ceremony set, consisting of a tea pot, four cups and circular tray, 26.5cm dia. £100 - 150 †

**448**  
An Art Deco style bronze plaque, of a girl; and a painted copper plaque depicting humming birds £30 - 40 †

**449**  
Joseph Heu, Austrian 1876-1952, bronze plaque depicting a young girl with pony, 26.5cm x 27cm £100 - 150 †

**450**  
After Millais, bronze plaque 'The Sower', 17cm x 17cm £40 - 60 †

**451**  
Joseph Krautwald, 1914 -2003, bronze plaque nativity dated 1972, 12cm x 13cm £80 - 120 †

**452**  
20th Century bronze plaque, depicting Christ and Disciples fishing, stamped to the reverse 15/2, 20cm x 21cm £40 - 60 †

**453**  
A bronze plaque, depicting a young girl with ribbon in her hair, inscribed 'Betty Mortimer' dated 1907, 11.5cm x 8.5cm, mounted in a gilt frame, 22cm x 17cm overall £40 - 60 †

**454**  
A 19th Century carved and gilt wood Oriental figure, of a seated deity with attendant bird holding a rosary, 28cm high £80 - 120 †



Lot 454

**455**  
An Eastern gilded and lacquered shrine figure, with haloed saint and attached coin, 32cm high £100 - 200 †

**456**  
A carved figure of Garuda, possibly Indonesian, 20cm high £60 - 80 †

**457**  
A carved wooden figure of a girl dancer, possibly Balinese, 20cm high £60 - 80 †

**458**  
An Eastern carved wood figure of a seated crowned male, 18cm high £60 - 100 †

**459**  
A Chinese Gambang Kayu, of boat shape complete with beaters, 52cm long £100 - 200 †



Lot 455



Lot 459



**460**  
An antique tall pewter flagon, with scroll handle and pierced thumb piece, 37cm high £300 - 50 †

**461**  
An 18th Century pewter inkstand, with pounce pot etc. £40 - 60 †

**462**  
A pair of 19th Century pewter baluster mugs, and a pewter jug with filtered spout £20 - 30 †

**463**  
An antique French pewter plaque, decorated in relief with head and shoulders study of Napoleon Bonaparte within foliate scroll decoration, impressed initial 'N' and touch mark to the reverse, 33cm dia. £40 - 60 †

**464**  
An antique French pewter platter, decorated in relief with a head and shoulders study of Louis XIV, touch marks to the front and verso, 30cm dia. £40 - 60 †

**465**  
A small Victorian cast iron door stop, in the form of two children holding a dog, 16cm high £20 - 40 †

**466**  
An Adam and Eve needlework sampler, signed Hester Vanderburgh, New York, aged 12, dated 1789, framed and glazed, 39cm x 56cm overall £60 - 80 †

**467**  
A Meerschaum pipe, cased £10 - 20 †

**468**  
A Sepik River (New Guinea) stool, of crocodile form, the head inlaid with cowrie shells as eyes, carved masks to the side with cowrie shell eyes, 87cm wide painted with pigment £200 - 300 †

**468A**  
A Trobriand Islands wooden lime spatula, carved with a head and bird with traces of lime, 38cm long £100 - 150 † A

**469**  
A finely carved Australian boomerang, 58cm wide and an Australian torpedo shaped wood club (Wadi) 63cm long £100 - 150 †

**469A**  
A South East Asian shovel, the grip carved as a naked man, 40cm long; and a finely carved Asian mask 19.5cm long £80 - 120 †

**470**  
An Oceanic leaf shaped dance club, with carved terminal, 163cm long £80 - 120 †

**470A**  
An unusual African sceptre, The shaft carved with three human figures, the terminal carved with a fierce human head, 59cm long £40 - 60 †

**470B**  
A small African wood stool, on four short legs and curved backrest, fine patination and wear, 28cm high £80 - 120 †

**471**  
A Zulu wood and copper wire clad ball club, the bulbous head covered with pointed studs, 69cm long £60 - 80 †

**471A**  
A wooden Zulu ball headed club, the shaft with four bands of woven copper wire, 76cm long £40 - 60 †

**471B**  
A carved wood African staff, with female figure terminal, 122cm long £6,080 †

**472**  
A hardwood stick, with snake climbing up the shaft, signed decoration to the snake, 92cm long £30 - 50 †

**472A**  
A small African wooden stool, 18cm high, the seat supported by a kneeling female figure and a double headed cylindrical wand, 28cm long £40 - 60 †

**473**  
An American Indian Folk Art hardwood walking stick, carved with seven human heads and two animals, 88cm long £40 - 60 †

**473A**  
An Oceanic leaf shaped wood paddle, of plain form, 165cm long £30 - 40 †

**474**  
An iron Ethiopian coptic cross of typical form, 51cm long and a Yoruba bronze spike with kneeling man finial, 16.5cm long £20 - 40 †

**474B**  
A woven fibre and applied cowrie shell African necklace, with large graduated carved shell lappets, largest lappet 21cm long £30 - 50 †

## Pictures & Prints

**475**  
A 20th Century miniature oil painting, depicting mounted Arab tribesmen carrying muskets, in decorative gilded and plush lined frame £40 - 60 †

**476**  
A 20th Century miniature oil painting, depicting a period couple alighting from a coach, indistinctly signed in oval gilded leaf decorated plush lined frame £40 - 60 †

**477**  
A circular 19th Century silhouette, head and shoulders portrait of an army officer, in circular mahogany frame; and Victorian school miniature portrait study of a lady in green dress in ebonised brass mounted frame £40 - 60 †

**478**  
19th Century Naive school, miniature portrait study of a lady wearing lace cap, unsigned watercolour contained in a rosewood frame, 11.5cm x 9cm, frame 20cm x 18cm in extremes £60 - 80 †

**479**  
Albin Roberts Burt 1783-1842, portrait miniature of a lady, signed to the reverse, dated 1821, also signed bottom right of the painting, the ebonised papier mâché frame having brass cartouche, stamped 'A.R. Burt Miniature Painter' £100 - 200 †

**480**  
Attributed to Henry Barlow Carter 1804-1868, study of a rural street with cottages and cathedral in the far ground, possibly York Minster, 13cm x 17cm £60 - 80 †

**481**  
William Bowyer R.A., R.W.S. 1926-2015, Study of the Ferry at Walberswick, signed watercolour 22cm x 45cm, framed and glazed £300 - 400 †

**482**  
Pen and ink study of Marianne Faithful, initialled S.G. 1980 bottom right and M.F. bottom left, label verso, 24cm x 16.5cm £20 - 40 †

**483**  
Japanese school, depicting giant spider and Samurai, watercolour, unsigned, 25cm x 37cm £50 - 80 †

**484**  
After Lucian Freud, portrait study of a man, pen and ink, 25cm x 17.5cm £30 - 50 †

**485**  
After Lucian Freud, self portrait, pen and ink, 29cm x 23cm £30 - 40 †

**486**  
After Elizabeth Melville, pen and ink sketch of Virginia Woolf, initialled bottom left V.W.S. and E.M. to the bottom right, 25cm x 19cm £30 - 50 †

**487**  
19th Century Suffolk school, study of a figure on a riverside path, windmill in far ground, unsigned oil on board, 24cm x 18cm £40 - 60 †

**488**  
19th Century school, a pair of watercolour studies depicting Cavaliers 'At Your Pleasure Sir' and 'English Gentleman', indistinctly signed and monogrammed, 33.5cm x 13.5cm £60 - 100 †



Lot 489

- 489**  
A framed and glazed decorative tile, painted with a study of an exotic pheasant sat on a branch, 21cm x 15cm £40 - 60 †
- 490**  
R. Kell, still life study of 'Sea Food on a Ledge', signed oil on board, 27cm x 23cm in decorated cream Rococo style frame £60 - 80 †
- 491**  
20th Century Continental school, study of a sunlit courtyard, indistinctly signed oil on canvas, 21cm x 26cm £40 - 60 †
- 492**  
19th Century school, pair of still life studies, indistinctly signed oils on canvas, 29cm x 40cm, in decorated cream Rococo style frames £100 - 150 †
- 493**  
A set of four coloured horse racing prints, 'Preparing To Start', 'At Speed', 'Winning' and 'Weighing and Rubbing Down', 18.5cm x 53cm £40 - 60 †

- 494**  
Jack Graham, 'Golden Gate Sunset', signed watercolour 51cm x 66cm £60 - 80 †
- 495**  
19th Century school, study of figures beside a lake, church in far ground, unsigned watercolour, 37cm x 52cm £40 - 60 †
- 496**  
R.J. Galbraith, study of a fishing vessel at sunset with figures unloading the catch, signed oil dated 1911, 66cm x 42cm £100 - 150 †
- 497**  
G.R. Rushton 1869-1947, study of a village square with figures and horse and cart, watercolour, 27.5cm x 37.5cm £40 - 60 †
- 498**  
19th Century school, study of a rural cottage with figure on a bridge, watercolour, 31cm x 45cm £40 - 60 †



Lot 504

- 499**  
Continental school, study of a town square inscribed 'At Unterseen', monogrammed and dated 1878, watercolour, 41cm x 29cm £30 - 50 †
- 500**  
E. Nevil, study of Abberville, signed watercolour, 34cm x 25cm £30 - 50 †
- 501**  
Audrey R. Valkhard, study of 'The Maltings and Snape Bridge', signed watercolour, 29cm x 37cm £40 - 60 †
- 502**  
19th Century school, study of Old Stoke Bridge, Ipswich, unsigned watercolour, 27.5cm x 36.5cm £40 - 60 †
- 503**  
Sir William Russell Flint, pencil signed limited edition 139/850, with blind stamp to margin, plate 34.5cm x 58.5cm; and Sir William Russell Flint, print of a reclining semi-nude woman £60 - 80 †
- 504**  
19th Century school, portrait study of Francis Robertson, watercolour, fragment label verso stating by 'Miss Sybil St.John Hunt', in decorative frilled ribbon tied frame, 45.5cm x 27cm £60 - 100 †
- 505**  
Contemporary school, collage abstract study, 16cm x 15cm £20 - 40 †
- 506**  
Ebenezer Wake Cook 1843-1926, figures before Colleoni statue Venice, signed watercolour, 17.5cm x 9.5cm £150 - 200 †
- 507**  
19th Century school, 'Wimbledon Road', watercolour, monogrammed A.T.B., dated 1884, 20cm x 28cm in decorative gilt frame £40 - 60 †
- 508**  
19th Century school, study of Bubblebrook, Worcester, monogrammed watercolour, dated 1884, 19cm x 28cm in gilt frame £40 - 60 †



Lot 513

**509**  
**Ebenezer Wake Cook 1843-1926**, study of Sorrento with figures picnicking on a cliff top, Bay of Naples in the background, signed watercolour, Fine Arts Society label verso, 21cm x 12cm £60 - 80 †

**510**  
**Ebenezer Wake Cook 1843-1926**, 'Wordsworth Walk Rydal Mount', signed watercolour, Fine Arts Society label verso, 21cm x 13cm £80 - 120 †

**511**  
**Ferdinand Marohn 1810-1865**, 'The Young Carrier', signed watercolour 26cm x 21cm £60 - 80 †

**512**  
**Wilhelm Widell 1893-1969**, Swedish, snow bound landscape with cottages, signed oil on canvas, 46cm x 62cm £80 - 120 †

**513**  
**20th Century English school**, Crown Hotel, unsigned watercolour, 35cm x 44cm £40 - 60 †

**514**  
**19th Century Dutch school**, study of a mother and child, watercolour, initialled D.H., 65 x 48cm contained in a Continental gilt frame £200 - 400 †

**515**  
**20th Century school**, The Orange Porch unsigned pastel, 30cm x 33cm £40 - 60 †



Lot 520

**516**  
**Lady Harriet Beresford 1788-1860**, Chaplins study of country house with figures playing beside nearby pond, unsigned watercolour, 22cm x 29cm, label verso £40 - 60 †

**517**  
**19th Century school**, Jesus and Fisherman, unsigned oil on canvas, 37cm x 54cm £200 - 300 †

**518**  
**Dennis Aldridge 1891-1985**, watercolour, pointers with their handler on moorland, signed watercolour 37cm x 53cm £100 - 200 †

**519**  
**Georgina Warne**, 'Listening To The Lark', signed oil on board, framed and glazed 75cm x 70cm £200 - 400 †

**520**  
**Nic Zainal Abidin (Nic Mohammed Salleh) Malaysian 1933-1993**, Wayang Purwa Ancient Shadow Play, 'Pendawa Lima (Five Warriors)' signed watercolour dated 1969, complete with gallery label and exhibition label, 57cm x 75cm £800 - 1,200 †

**521**  
**Seven various prints**, including Spy Vanity Fair, humorous caricatures of The Judiciary etc. £40 - 60 †

**522**  
**Suzanne Lawrence**, 'Brancaster Boardwalk', initialled oil on board, 29.5cm x 29cm £60 - 80 †

**523**  
**Suzanne Lawrence**, 'Little Black Cottage Cley', initialled oil on board, 29.5cm x 39cm £60 - 80 †

**524**  
**Suzanne Lawrence**, 'Time To Go Home' initialled oil on board, 30.5cm x 40.5cm £60 - 80 †



Lot 522



Lot 523



Lot 541



Lot 544

**525**  
**Suzanne Lawrence**, 'Flooded Marsh 7', oil on board 39cm x 38cm  
 £60 - 80 †

**526**  
**Suzanne Lawrence**, 'Cley Quay', initialled oil on board, 39cm x 39cm  
 £60 - 80 †

**527**  
**Suzanne Lawrence**, 'Clouds Moving Across Summer Sky', initialled oil on board, 40cm x 50cm  
 £60 - 80 †

**528**  
**Suzanne Lawrence**, 'Autumn Morning', initialled oil on board 50cm x 60cm  
 £100 - 200 †

**529**  
**A 19th Century Japanese woodblock print**, of a Geisha girl in typical attire, fan with calligraphy to left hand side, image 23cm x 34cm, framed and glazed; and a Chinese watercolour of shellfish, calligraphy and red seal mark, image 21cm x 46cm, framed and glazed  
 £60 - 80 †

**530**  
**Hamilton Chapman**, 'A Corner Of A Sheep Fold', signed watercolour dated 1892, 18cm x 24cm

**531**  
**L. Camonier**, still life study, 'Flowers In A Vase', signed oil on canvas, dated 1880, 21cm x 23cm in ornate gilt frame  
 £40 - 60 †

**532**  
**A study of Cor Visser**, in his studio, unsigned possibly self portrait, oil on canvas, 75cm x 92cm  
 £150 - 250 †

**533**  
**Cor Visser 1903-1982**, charcoal and ink study of fishing vessels, 66cm x 59cm  
 £100 - 150 †

**534**  
**Cor Visser 1903-1982**, charcoal study 'Trees in Winter', 73cm x 54cm  
 £100 - 150 †

**535**  
**Cor Visser 1903-1982**, portrait study of Anthea, signed black chalk and pencil, dated 1977, 46cm x 37cm; and another similar dated 1971  
 £80 - 120 †

**536**  
**Cor Visser 1903-1982**, study of 'The Ancient House, Ipswich' signed watercolour, dated 1937, 57cm x 34cm  
 £150,250 †

**537**  
**Cor Visser 1903-1982**, self portrait study at the age of 43, signed and dated 1946, black conté pencil on buff paper  
 £80 - 120 †

**538**  
**Cor Visser 1903-1982**, portrait of Emmy, signed charcoal dated 1956, 45cm x 33cm  
 £100 - 150 †

**539**  
**Cor Visser 1903-1982**, self portrait at the age of fifteen, signed and dated 1919, lino cut, 35cm x 23cm  
 £100 - 150 †

**540**  
**Cor Visser 1903-1982**, page from the sketch book, fishermen mending nets, pencil study, unsigned, 25cm x 43cm  
 £50 - 80 †

**541**  
**Cor Visser 1903-1982**, 'Myself Member Of The Visser Family' signed and dated 1955, study of the artist wearing cravat and black beret, chalk on paper, 25cm x 17cm  
 £50 - 60 †

**542**  
**Cor Visser 1903-1982**, 'Shipyard, Ipswich Docks' chalk study, unframed, 63cm x 80cm  
 £100 - 150 †

**543**  
**Cor Visser 1903-1982**, 'Street in Antwerp' dated 1930, wood cut print, 69cm x 49cm  
 £40 - 60 †

**544**  
**Cor Visser 1903-1982**, self portrait study, conté and black chalk, dated 1975, 50cm x 30cm  
 £50 - 70 †

**545**  
**Cor Visser 1903-1982**, portrait study 'Emmy', signed charcoal dated 1936, 27cm x 17cm  
 £100 - 150 †

**546**  
**Kay Edmunds**, portrait study of Cor Visser dated 1938, signed charcoal with annotation verso, 41cm x 30cm  
 £150 - 250 †



Lot 559

**547**  
**Cor Visser 1903-1982**, 'Fishing Boats, Zeebrugge Harbour', charcoal study signed bottom right, dated '34, 36cm x 46cm  
 £100 - 150 †

**548**  
**Cor Visser 1903-1982**, 'Autumn Evening at Bruges, Belgium', signed pastel dated 1936, 40cm x 49cm  
 £150 - 250 †

**549**  
**Cor Visser 1903-1982**, study of a seated elderly lady lace making, initialled C.V. bottom right, dated 1936, 67cm x 51cm  
 £60 - 100 †

**550**  
**Cor Visser 1903-1982**, study of a lady lace making in Bruges Belgium, watercolour signed and dated 1936, (NB glass shattered) 45cm x 57cm  
 £60 - 100 †

**551**  
**Cor Visser 1903-1982**, study of 'Anna' at 27, signed watercolour dated 1938, 59cm x 46cm; a portrait study of 'Emmy' conté, pencil and red chalk and another dated 1933  
 £100 - 150 †

**552**  
**Cor Visser 1903-1982**, study of a lady seated at a table, charcoal, unsigned, 64cm x 46cm  
 £100 - 150 †

**553**  
**Cor Visser 1903-1982**, 'Looking At The Finished Picture', charcoal study dated 1955, 49cm x 63cm  
 £100 - 150 †

**554**  
**Cor Visser 1903-1982**, small pencil study 'Emmy', 12.5cm x 9.5cm framed and glazed with large white mount  
 £50 - 60 †

**555**  
**Cor Visser 1903-1982**, portrait charcoal drawing 'Emmy' (wife of Cor Visser) unsigned charcoal circa 1935  
 £100 - 150 †

**556**  
**After Guido Reni**, portrait study of Beatrice Cenci, unsigned oil on canvas, 57cm x 46cm  
 £200 - 300 †

**557**  
**Charles Morris RWS**, study of high tide Trevone, unsigned watercolour Gallery label and information verso, 25cm x 35cm  
 £200 - 300 †

**558**  
**Sidney Foley**, Wapping Group of Artists, 'Winter Sundown Chelsea', signed watercolour, 19cm x 26.5cm  
 £60 - 100 †

**559**  
**John Minton**, study of 'Carrons Warehouse' signed watercolour, Gallery label verso for the Lefevre Gallery, New Bond Street, 27.5cm x 37.5cm  
 £500 - 600 †

**560**  
**An unusual 19th Century pokerwork picture**, depicting a mystic figure chariot racing, 46cm x 60cm in gilt frame  
 £200 - 400 †

**561**  
**Early 20th Century school**, study of The RMS Mauretania in New York, oil on canvas indistinctly initialled, 40cm x 48cm  
 £200 - 300 †



Lot 561

**562**  
**18th Century Dutch school**, study of figures in a boat with cottage and bridge in the background, unsigned oil on panel, 38cm x 46cm  
 £600 - 800 †

**563**  
**F. Crompton**, after Spurling study of The HMS London, signed oil on canvas, 22cm x 28cm  
 £40 - 60 †

**564**  
**F. Crompton**, study of a man ship modelling, signed oil on canvas, 45cm x 28cm  
 £40 - 60 †

**565**  
**After Augustus John Atkinson**, a collection of humorous caricature prints published by William Miller, contained in six frames  
 £40 - 60 †

**566**  
**A collection of 19th Century educational prints**, by Harris & Son, contained in four frames  
 £40 - 60 †

**567**  
**Charles Mills Sheldon 1866-1928**, 'HMS Revenge, a 14,000 ton Revenge Class Super Dreadnought Battleship', signed oil on canvas and inscribed, 24cm x 49cm NB. HMS Revenge saw action in the Battle of Jutland  
 £150 - 200 †



Lot 562



Lot 579

577

**Manner of Adriaen Van Ostade 1610-1685**, a 17th Century oil on cradled panel depicting peasants drinking and dancing in a barn, unframed, 45cm x 37cm

£400 - 600 †

578

**19th Century school**, large study depicting a huntsman taking aim with his gun, landscape beyond, unsigned oil on canvas, 124cm x 93cm contained in an oak frame

£400 - 600 †

579 ✓

**Kenneth Webb born 1927**, study of a barn interior with dog and chickens, signed oil on canvas, 50cm x 75.5cm

£1,000 - 1,500 †

580 ✓

**Kenneth Webb born 1927**, study of a rural landscape, river and cottages in the foreground, mist shrouded mountains in the far ground, probably Ireland, 50cm x 40cm

£1,000 - 1,500 †

568

**English school**, early 19th Century portrait of a gentleman, oil on canvas in original gilt frame, 76cm x 61cm

£120 - 180 †

569

**English school**, early 19th Century wooded river landscape, oil on relined canvas in an ornate gilt frame, 50cm x 60cm

£120 - 180 †

570

**Cusco school**, early 19th Century an Ark Angel surrounded with a border of flowers, oil on canvas, 65cm x 53cm

£200 - 300 †

571

**Walter Lockenberg 1875-1921**, 'Bibelot Dog', oil on canvas signed, inscribed 'Peking' and dated 1915 in a Chinese oval pierced hardwood frame, 47cm x 37cm

£100 - 150 †

572

**Dutch school**, 19th Century, skaters on a frozen lake by Muiderslot Castle near the Haig, oil on pine panel, 27cm x 23cm

£80 - 120 †

573

**Andrew Grant Kurtis**, a mountainous lake land scene with figures and a dog in the foreground, oil on canvas, signed, 40cm x 50cm

£100 - 1,500 †

574

**Joseph Paul 1804-1887**, river landscape with a horse rider and other figures by a cottage, oil on panel, 46cm x 36cm

£150 - 250 †

575

**English school**, early 19th Century a hare coursing scene, oil on canvas, 28cm x 38cm

£160 - 220 †

576

**Manner of Richard Wilson 1713-1782**, river landscape figures in the foreground, a bridge beyond, oil on canvas, 30cm x 40cm

£100 - 150 †

581 ✓

**Kenneth Webb born 1927**, steeplechasing scene, oil on canvas, 50cm x 100cm

£800 - 1,000 †

582 ✓

**Kenneth Webb born 1927**, 'Summer Storm Clouds', signed oil on canvas, 40cm x 50cm

£1,500 - 2,000 †



Lot 581



Lot 582

Lots marked ✓ please refer to Droit de Suite royalty charges in Terms and Conditions  
† Each lot is subject to a Buyer's Premium of 20% + VAT (24%)



Lot 584

583 ✓

**Kenneth Webb born 1927**, 'Wild Flowers', signed oil on canvas, 40cm x 50cm £1,500 - 2,000 †

584 ✓

**Kenneth Webb born 1927**, 'Flowers By The Beach', signed oil on canvas, 45cm x 35cm £1,000 - 1,500 †

585

**Cavendish Morton**, study of Woodbridge Tide Mill, signed watercolour, 15.5cm x 19.5cm £100 - 150 †

586

**James Noble British 1919-1989**, study of 'Wheatcroft Rose', signed oil on board and a companion 'Swan Lake', 17.5cm x 12.5cm £300 - 400 †

587

**Janet Grahame Johnstone 1928-1979**, study of vixen fox and family in a woodland clearing of summer flowers, monogrammed J.J. watercolour, 43cm x 64cm £100 - 200 †

588

**Janet Grahame Johnstone 1928-1979**, study of a badger set in woodland at night, initialled J.J., 41cm x 61cm £100 - 150 †

589

**Janet Grahame Johnstone 1928-1979**, study of an otter family, watercolour initialled J.J., 41cm x 53cm £100 - 150 †



Lot 583



Lot 584

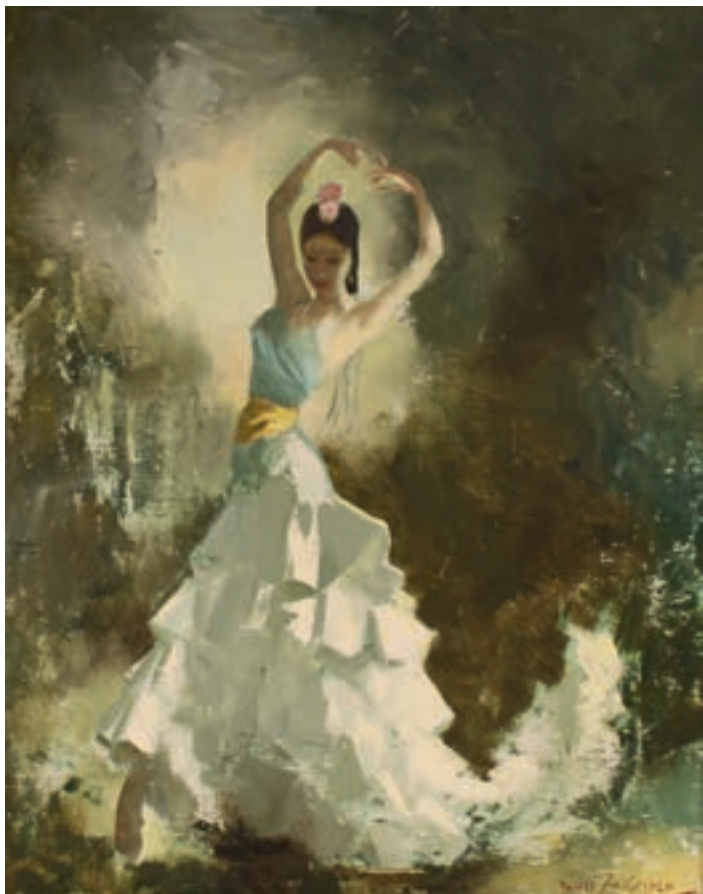


Lot 588





Lot 590



Lot 594

**590**  
**Janet Grahame Johnstone 1928-1979**, study of otters, watercolour initialled J.J., 36cm x 51cm  
 £100 - 150 †

**591**  
**Janet Grahame Johnstone 1928-1979**, study of a hare and young, watercolour initialled J.J., 34cm x 53cm  
 £100 - 150 †

**592**  
**Janet Grahame Johnstone 1928-1979**, study of seated red setters amongst flowers, initialled J.J., signed watercolour, 44cm x 56cm  
 £100 - 150 †

**593**  
**Anne Grahame Johnstone 1928-1998**, icon type study of Madonna and Child, watercolour and mixed media, initialled A.G. 20cm x 18cm in gilt frame  
 £100 - 150 †



Lot 595



Lot 596

**594 ✓**  
**Doris Zinkeisen 1898-1991**, study of a Spanish dancer, signed oil on canvas, 50cm x 40cm  
 £600 - 800 †

**595**  
**Anna Zinkeisen 1901-1976**, study of roses, signed oil on board, 43cm x 34cm  
 £500 - 700 †

**596 ✓**  
**Anna Zinkeisen 1901-1976**, signed oil on board 'Wild Flowers', 60cm x 90cm  
 £1,000 - 1,500 †

**597**  
**Janet Grahame Johnstone 1928-1979**, Anne Graham Johnstone 1928-1998, a collection of small watercolour studies depicting a fawn, various other wildlife works and a miniature study entitled 'Snow Chariot' £300 - 400 †

**598**  
**Rowlandson**, three coloured caricature prints in common frame £30 - 40 †

**599**  
**Rowlandson**, coloured double sided caricature 'A Visit To The Aunt' and 'Doctor Syntax' £50 - 80 †

**600**  
**Rowlandson**, coloured caricature 'Country Characters, Publican', plate 24cm x 17cm £40 - 60 †

**601**  
**Cruikshank**, colour caricature 'Royal Amusement Or Nature Will Prevail', 23cm x 52cm £70 - 100 †

**602**  
**Heath**, humorous colour caricature 'Steam Boat', plate 34cm x 24cm £50 - 80 †

**603**  
**19th Century school**, 'The Musical Friar', unsigned oil on board, contained in an ornate gilt frame, 33cm x 20cm £60 - 80 †

**604**  
**18th Century school**, portrait study of a husband and wife in front of roses, unsigned oil on canvas, 95cm x 82cm contained in an antique gilt wood frame £300 - 400 †

**605**  
**Bernard de Hoog**, Dutch 1867-1943, 'The Broken Doll' signed oil on canvas, contained in an ornate gilt frame (some damage to frame), 60cm x 75cm £800 - 1,200 †

**606**  
**Flemish school**, early 19th Century landscape with a man and cattle on track by a cottage, oil on panel, unframed 22.5cm 31.5cm £80 - 120 †

**607**  
**19th Century English school**, young man and his dog carrying two cages of songbirds; and another of a lad carrying a basket of strawberries, pair of oils on canvas laid on board in gilt framed, 35cm x 26cm £100 - 150 †

**608**  
**English school**, 19th Century portrait of a gentleman wearing a white cravat, oil on canvas contained in gilt frame, 76cm x 74cm £80 - 120 †

**609**  
**Cor Visser 1903-1982**, pencil signed sketch of the artist dated 1932; photographs of the artist in his studio; unframed print of Leopold III, Belgium etc. £40 - 60 †

**610**  
**Cor Visser 1903-1982**, a folio of various watercolours, drawings, etc. all unframed £200 - 300 †

**611**  
**A collage of pen and ink drawings illustrating The Early Travels of Cor Visser and his wife Emmy**, framed and glazed as one £100 - 150 †

**612**  
**John Speed**, coloured map of Hartfordshire, 36cm x 52cm £40 - 60 †

**613**  
**19th Century school**, 'A Musical Evening', unsigned watercolour, unframed, 25cm x 30cm £20 - 40 †

**614**  
No Lot

## Furniture

**615**  
**A 19th Century mahogany bow fronted chest**, of two short and three long graduated drawers, raised on a shaped apron and bracket feet, 106cm wide £100 - 150 †

**616**  
**A mahogany bow fronted two drawer cutlery cabinet**, raised on cabriole supports and claw and ball feet, 96cm wide £100 - 200 †

**617**  
**A French style gilded console table**, of serpentine form, mirrored top above pierced foliate frieze raised on shaped supports, 130cm wide; and a matching ornate wall mirror with bevelled plate surmounted by a basket of flowers and flanked by pierced foliate scrolls and ribbons, 139cm x 72cm in extremes £300 - 500 †

**618**  
**A Victorian mahogany hall table**, fitted with a single drawer having shaped backpiece with foliate motif, raised on turned tapering supports, 107cm wide x 47cm deep x 100cm high overall £100 - 150 †



Lot 627

**619**  
**A good quality hardwood and brass inlaid roll top bureau**, fitted four short and one long drawer below, raised on cabriole supports, 81cm wide x 43cm high £100 - 150 †

**620**  
**A 19th Century rosewood china display cabinet**, surmounted by a green marble top and flanked by tapering rounded columns with carved capitals, interior adjustable shelves enclosed by a pair of glazed panelled doors, raised on a platform plinth and square feet, 125cm wide x 106cm high x 36cm deep overall £200 - 300 †

**621**  
**An early 20th Century mahogany china display cabinet**, of narrow proportions enclosed by a single glazed panel door, raised on square tapering supports, 61cm wide x 138cm high x 32cm deep £40 - 60 †

**622**  
**A 19th Century rosewood china display cabinet**, the adjustable shelves enclosed by a pair of glazed panel doors raised on a platform plinth, 129cm wide x 39cm deep x 136cm high overall £100 - 200 †

**623**  
**A pair of green and cream marble columns**, tapering square section, 113cm high £300 - 400 †

**624**  
**A modern French style gilt metal and onyx topped hall table**, on gilded Rococo style supports, 90cm wide x 77cm high x 29cm deep overall £30 - 50 †

**625**  
**A 19th Century walnut cushion framed mirror**, plate in two sections, surmounted by an arched pediment, 100cm x 47cm £80 - 120 †

**626**  
**A good quality Victorian mahogany dressing table**, fitted with a swing mirror above four trinket drawers, two drawers below raised on turned fluted legs terminating in white porcelain castors, 121cm wide x 58cm deep £60 - 80 †

**627**  
**An impressive George III mahogany chest**, fitted eight small drawers above two short and three long graduated drawers with turned bun handles, raised on a shaped apron and bracket feet, 128cm wide x 129cm high x 52cm deep £200 - 400 †



Lot 628

**628**  
A good quality George III style mahogany chest, on stand, having fold over top, fitted six short drawers above two long drawers, the base raised on bold carved cabriole supports terminating in ball and claw feet, 82cm wide x 137cm high x 47cm deep £200 - 300 †

**629**  
A large Georgian mahogany bow fronted, cross banded and inlaid sideboard, with thistle decoration fitted two central drawers above a shaped frieze, flanked by cellarette drawers and raised on square tapering supports, 184cm wide x 76cm deep x 93cm high £150 - 250 †



Lot 640

**630**  
A Victorian mahogany bookcase, the upper section fitted adjustable shelves above cupboards below raised on a platform plinth, 118cm wide x 201 cm high x 40 cm deep in extremes £80 - 120 †

**631**  
An Edwardian painted satinwood china display cabinet, the interior glass shelves enclosed by a glazed panelled door above blind frieze drawer on slender cabriole supports united by an under tier, having decoration of garlands of flowers, 110cm wide x 184cm high £100 - 150 †

**632**  
A 20th Century mahogany china display cabinet, fitted adjustable glass shelves enclosed by a pair of bevelled glazed doors beneath an arched carved pediment, two drawers below on square tapering supports, 77cm wide x 49cm deep x 190cm high £40 - 60 †

**633**  
A Continental walnut free standing corner display cabinet, enclosed by a glazed panelled door, 73cm wide x 148cm high £40 - 60 †

**634**  
An 18th Century walnut bureau bookcase, the upper section fitted pigeonholes and shelves enclosed by a pair of bevelled mirror panel doors, the fall front revealing a fitted interior above four long graduated drawers raised on bracket feet, 180cm wide £250 - 350 †

**635**  
An early 20th Century walnut double dome display cabinet, in two sections, the adjustable shelves enclosed by two pairs of panelled doors, label for Liberty & Co. to the reverse, 92cm wide £150 - 250 †

**636**  
An oak open fronted bookcase, fitted adjustable shelves and raised on a platform plinth, 100cm wide overall x 190cm high overall £60 †

**637**  
A 19th Century mahogany hanging china display cabinet, enclosed by a glazed panel door and raised on a bracket, 60cm wide x 83cm high £40 - 60 †

**638**  
A walnut longcase clock, having narrow trunk, the hood with carved pediment flanked by barley twist columns, enclosing a brass 10" dial, the Steel chapter ring inscribed Edwin Burgis, London, having brass corner spandrels and foliate engraved decoration, supporting an eight day movement striking on a bell, full length trunk panel door above a box base and bracket supports, 200cm high £300 - 500 †

**639**  
A Continental coopered butter carrier, flanked by ring handles, 49cm high £60 - 80 †

**640**  
A 19th Century mahogany book press, 39cm wide x 54cm high overall £200 - 300 †

**641**  
An early 20th Century oak Arts & Crafts design stick stand, shaped pierced ends with heart motifs, 66.5cm wide x 77cm high £40 - 60 †

**642**  
An early 20th Century oak three division stick stand, 56cm wide £30 - 50 †

**643**  
A 18th Century carved gilt wood wall mirror, the foliate scroll pediment with inset small mirror (AF but with some missing pieces present) approx. 150cm x 100cm £100 - 200 †

**644**  
A pair of mahogany wall mounting display cabinets, of shallow proportions, 40cm wide x 173cm high £100 - 200 †

**645**  
A 19th Century carved pine fireplace, flanked by Corinthian cluster columns and leaf capitals, having stepped pediment, approx. 155cm wide x 150cm high (in sections). Originally from Crane Hall, Ipswich £100 - 200 †

**646**  
A 19th Century mahogany cheval mirror, in turned stand raised on reeded supports, terminating in brass caps and castors, 68cm wide x 161cm high £150 - 250 †

**647**  
An 18th Century Continental walnut chest, fitted four drawers raised on moulded cushion frieze, terminating in bracket feet, approx. 54cm wide x 84cm high x 34cm deep £300 - 400 †



Lot 655



Lot 657

**648**  
A 19th Century mahogany barrel back armchair, upholstered in floral printed Damask and raised on square tapering supports, terminating in brass castors, 118cm high £200 - 300 †

**649**  
A late 19th / early 20th Century wing back armchair, upholstered in floral stamped velour, raised on square tapering supports terminating in castors £60 - 80 †

**650**  
A large oval decorative gilt framed wall mirror, in the Rococo style with bevel plate, 84cm x 70cm in extremes £40 - 60 †

**651**  
A gilt framed bevel edged wall mirror, with shell and foliate scroll pierced decoration, 76cm x 60cm overall £40 - 60 †

**652**  
A gilt framed bevel edged wall mirror, in the Rococo manner, decorated foliate scrolls, 108cm x 60cm in extremes £60 - 80 †

**653**  
A brass framed wall mirror, fitted with triple candle sconces, rope twist border and foliate scroll decoration, 62cm x 46cm £60 - 80 †

**654**  
A 19th Century gilt framed pier mirror, with applied foliate scroll decoration, the pediment inset with a vignette of a lady, 64cm x 33cm overall £80 - 120 †

**655**  
A Victorian burr walnut Davenport, with pop up back, the piano top opening to reveal an interior writing slope beneath two drawers, side cupboard opening to reveal four drawers and shelves, supported on turned carved front supports terminating in an inverted platform plinth, 70cm wide x 58cm deep x 98cm high £200 - 300 †

**656**  
A 19th Century mahogany and satinwood cross banded fold over card table, 91cm wide £80 - 120 †

**657**  
A miniature oak coffer, having triple panelled lid, 78cm wide £80 - 120 †

**658**  
A mahogany and rosewood cross banded bow fronted hall table, fitted with a single drawer and raised on turned fluted tapering supports, 82cm wide x 30cm deep x 74cm high £60 - 100 †

**659**  
A walnut hanging corner cupboard, having arched pediment, the interior shelves enclosed by a glazed panelled door, 64cm wide x 86cm high overall £40 - 60 †

**660**  
A George III style mahogany occasional table, with pie crust border and tilt top, raised on a ring turned baluster column and tripod base, 51cm dia. £40 - 60 †

**661**  
A pair of 19th Century mahogany tray top bedside cupboards, raised on ring turned tapering supports, 38cm wide x 38cm deep x 72cm high £80 - 120 †

**662**  
A rustic style oak curved stool, having grotesque mask decoration, raised on out swept legs, 49cm wide x 37cm deep £40 - 60 †



Lot 658



Lot 662



Lot 665



Lot 666

**663**

**A George III mahogany and cross banded serpentine tea table**, fitted with a single drawer and raised on square section tapering supports, 90cm wide £60 - 80 †

**664**

**A 19th Century mahogany and cross banded bow fronted side table**, fitted with a single drawer and raised on square section tapering supports, 74cm wide x 48cm deep x 67cm high £40 - 60 †

**665**

**A pair of Chippendale style walnut wall mirrors**, with fret carved decoration and moulded cushion frieze, shell and bird motifs, 80cm x 50cm £80 - 120 †

**666**

**A mahogany and satinwood cross banded bureau**, of small proportions, the fall front opening to reveal a serpentine interior arrangement of drawers and pigeonholes around a central cupboard, two short and one long drawer below, raised on square tapering supports and spade feet, 58cm wide x 96cm high £60 - 80 †

**667**

**An Edwardian mahogany parquetry and marquetry decorated occasional table**, raised on square section supports united by a shaped under tier, 65cm wide x 43cm deep x 77cm high £40 - 60 †

**668**

**An Edwardian walnut display cabinet**, enclosed by a single carved panel and glaze door, 55cm wide x 37cm deep x 87cm high (converted) £20 - 40 †

**669**

**A Victorian ebonised and walnut cross banded side cabinet**, the upper section surmounted by a pierced brass gallery, glazed folio cabinet to base with gilt borders, 66cm wide x 41cm deep x 90cm high £60 - 80 †

**670**

**An oak pedestal writing desk**, the leather inset top above three frieze drawers with cupboards below, raised on platform plinths, 112cm wide x 58cm deep x 80cm high £100 - 200 †

**671**

**A 19th Century oak joint stool**, 46cm x 25cm £40 - 60 †

**672**

**A Victorian mahogany sideboard**, fitted two drawers, cupboards below raised on a platform plinth, 152cm wide x 42cm deep x 90cm high £60 - 80 †

**673**

**A 19th Century mahogany bow fronted sideboard**, fitted central drawer above an arched frieze flanked by cellarette drawers and raised on ring turned tapering supports, 120cm wide x 52cm deep x 88cm high £50 - 80 †

**674**

**A Victorian mahogany pedestal writing desk**, the upper section fitted four drawers, three drawers to the frieze above a cupboard with mock panel drawer fronts and three drawers to the opposing pedestal, raised on platform plinths 131cm wide x 57cm deep x 90cm high overall £100 - 200 †

**675**

**A 19th Century rosewood and inlaid centre table**, the cross banded circular tilt top with diamond motif, raised on a fluted baluster column and triform base, terminating in scroll feet and castors, 121cm dia. x 73cm high £100 - 200 †

**676**

**A Victorian mahogany and cross banded bow fronted sideboard**, fitted single drawer above an arched frieze flanked by cellarette drawer and deep cupboard, 99cm wide x 50cm deep x 89cm high £50 - 80 †

**677**  
**A Regency design mahogany window seat**, having scroll arms and turned tapering supports terminating in peg feet, 85cm wide x 33cm deep x 62cm high  
 £100 - 150 †

**678**  
**A Victorian brass revolving music stool**, on out swept stretcher supports  
 £30 - 50 †

**679**  
**A Victorian brass six division stick stand**, 31cm wide x 65cm high  
 £30 - 50 †

**680**  
**A Victorian style mahogany six drawer hall table**, raised on turned tapering supports, 104cm wide x 31cm deep x 80cm high  
 £100 - 150 †

**681**  
**A large Victorian mahogany extending dining table**, fitted four extra leaves and raised on bold turned and fluted baluster supports terminating in brass castors, 136cm x 330cm fully extended, complete with a table leaf stand, 54cm wide x 155cm high  
 £400 - 600 †

**682**  
**A pair of Art Deco walnut three drawer bedside chests**, 31cm wide x 52cm deep x 72cm high  
 £200 - 300 †

**683**  
**An early 20th Century oak revolving desk chair**, having red leatherette upholstery, the four legs raised on brass castors, manufacturer Kenrick Jefferson  
 £80 - 120 †

**684**  
**A pair of walnut and cross banded four drawer bedside chests**, 37cm wide x 37cm deep x 85cm high  
 £200 - 300 †

**685**  
**A 19th Century mahogany D end extending dining table**, with drop leaf centre section raised on square tapering supports, 300cm x 137cm extended  
 £200 - 300 †

**686**  
**A 19th Century mahogany harlequin set of dining chairs**, having arched backs, pierced slats above upholstered stuff over seats raised on square section supports  
 £100 - 200 †

**687**  
**An 18th Century gilt framed wall mirror**, in the Rococo manner surmounted by a cherub amid foliate scroll decoration, 107cm x 67cm overall  
 £200 - 400 †

**688**  
**A nest of four mahogany occasional tables**, raised on turned spindle supports, 56cm wide x 38cm deep in extremes  
 £30 - 50 †

**689**  
**A French style carved and painted three seater settee**, in the Rococo manner  
 £250 - 350 †

**690**  
**A Victorian mahogany framed deep seated armchair**, upholstered in pink Dralon to the seat, back and armrests, raised on turned columns and front supports terminating in brass castors  
 £40 - 60 †

**691**  
**A Victorian mahogany deep seated easy chair**, upholstered in pink Dralon to the back seat and arm rest, raised on spindle columns and turned front supports terminating in castors  
 £40 - 60 †

**692**  
**A mahogany cockpen style elbow chair**, with wicker seat raised on square section supports  
 £40 - 60 †

**693**  
**A set of four Victorian walnut salon chairs**, upholstered in floral stamped brocade to the buttoned oval backs and serpentine seats, raised on cabriole front supports terminating in castors  
 £40 - 60 †

**694**  
**A pair of Edwardian mahogany and satinwood inlaid elbow chairs**, in the Sheraton manner, upholstered stuff over seats raised on square tapering supports, terminating in spade feet  
 £40 - 60 †

**695**  
**A mahogany four drawer apothecary style side table**, each drawer with a Pharmacy label, 128cm wide x 31cm deep x 78cm high  
 £100 - 150 †

**696**  
**A pair of mahogany stools**, with lion mask decoration, upholstered seats raised on out swept supports, 60cm wide  
 £150 - 250 †



Lot 679

**697**  
**A Florentine style gilt and painted standard lamp**, having turned and fluted column raised on a circular base  
 £40 - 60 †

**698**  
**A mid-20th Century chinoiserie decorated standard lamp**, having turned and fluted column raised on a circular base; and another similar  
 £80 - 120 †

**699**  
**A mahogany five drawer chemist or apothecary's style side table**, the drawers with Pharmacy labels raised on square section chamfered supports, 122cm wide x 31cm deep x 78cm high  
 £100 - 150 †

**700**  
**A pair of walnut cross banded and chevron strung two drawer side tables**, raised on square section chamfered supports, 99cm x 46cm  
 £400 - 500 †

**701**  
**A Victorian burr walnut loo table**, the shaped top raised on a carved quatrefoil base terminating in castors, 142cm x 109cm  
 £180 - 220 †

**702**  
**An unusual brass basin stand**, raised on shaped supports terminating in hoof feet  
 £30 - 50 †

**703**  
**A Victorian mahogany three tier whatnot**, the shaped shelves raised on turned baluster columns 60cm wide x 31cm deep x 79cm high  
 £30 - 50 †

**704**  
**An Edwardian mahogany and inlaid two tier jardinière stand**  
 £20 - 40 †

**705**  
**A Victorian inlaid walnut side cabinet**, having raised mirrored back raised on turned fluted columns above a cupboard base and open end shelves with fret work decoration, terminating in turned feet and castors, 106cm wide x 143cm high  
 £180 - 220 †

**706**  
**An 18th Century walnut boxwood strung and cross banded chest**, the top inlaid with an oval quarter panel above two short and three long graduated drawers raised on a cushion frieze and bun feet, 94cm wide x 56cm deep x 90cm high  
 £200 - 400 †

**707**  
**A George III mahogany serpentine card table**, the fold over top raised on square section supports, 84cm wide  
 £60 - 100 †



Lot 720

**708**  
A large antique oak gate leg dining table, with rounded drop leaves, single end drawer raised on turned baluster columns and block feet united by stretchers, 133cm wide x 155cm extended £150 - 200 †

**709**  
A mahogany occasional table, the rectangular snap top raised on a turned column and tripod base £20 - 40 †

**710**  
A set of mahogany hanging bookshelves, fitted with a single drawer to the base, having shaped pierced ends, 62cm wide £30 - 50 †

**711**  
A 19th Century mahogany snap top occasional table, the circular top raised on gun barrel column and tripod base £40 - 60 †

**712**  
A mahogany three tier folding cake stand £20 - 40 †

**713**  
A set of Victorian mahogany graduated hanging bookshelves, raised on spiral turned columns, 80cm wide £30 - 50 †

**714**  
A set of Victorian walnut hanging bookshelves, fitted with three drawers, 61cm wide x 46cm high £40 - 60 †

**715**  
A set of Victorian mahogany graduated bookshelves, having pierced shaped ends, 60cm wide £30 - 50 †

**716**  
A late 19th Century child's department chair, with cane seat and a pair of 19th Century elm spindle back dining chairs £40 - 60 †

**717**  
An 18th Century oak Bible box, carved with initials M.M. and dated 1719, 66cm wide £300 - 400 †

**718**  
A Victorian mahogany tray top side table, fitted two drawers raised on turned fluted supports, terminating in brass caps and castors, 107cm wide £150 - 200 †

**719**  
A 19th Century teak and brass mounted Campaign chest, the lifting lid above two drawers with sunken brass handles raised on platform plinths, flanked by brass dropped carrying handles, approx. 124cm wide x 63cm deep x 80cm high £300 - 400 †

**720**  
A Continental polychrome decorated Blackamoor jardinière stand, raised on foliate scroll base, 94cm high £100 - 150 †

**721**  
A French style oval low occasional table, surmounted by a green onyx top, the frieze decorated Sevres style panels within gilt mounts, raised on turned fluted legs 113cm wide £40 - 60 †

**722**  
A 19th Century walnut and Tunbridge banded breakfront credenza, embellished with gilt metal mounts, the interior fabric lined shelves enclosed by four arch panelled doors on a platform plinth terminating in bracket feet, 180cm wide x 36cm deep x 112cm high £600 - 800 †

**723**  
An 18th Century and later Indo-Portuguese cabinet on stand, or contador, possibly Goanese surmounted by a pierced brass gallery, the upper section fitted 16 drawers, with ornate escutcheons and brass pulls, the stand having pull out slide and single drawer raised on square section supports, 92cm wide overall, 127cm high £1,200 - 1,500 †

**724**  
An ornate gilt framed mirror, with pierced scrolled pediment and slip panels, 80cm x 85cm £40 - 60 †

**725**  
A Sparta carpet, approx. 9'5" x 6'6" £40 - 60 †

**726**  
A Lilihan rug, approx. 6'8" x 3'11" £40 - 60 †

**727**  
An Anglo-Indian carved hardwood occasional table, profusely decorated foliage and shaped top, raised on square section base terminating in tapering legs, 69cm wide x 60cm high £200 - 300 †

**728**  
A near of pair of 19th Century French Ormolu mounted two tier console tables, the marble tops surmounted by pierced galleries within inswept sides, raised on turned reeded supports, united by under tiers on out swept feet, 58cm wide x 80cm and 78cm high respectively £200 - 400 †

**729**  
A Victorian mahogany folding towel rail, raised on baluster columns and cabriole supports £30 - 50 †

**730**  
A Victorian mahogany two drawer side table, raised on square section supports terminating in brass castors, 107cm wide x 50cm deep x 72cm high £100 - 150 †



Lot 722



Lot 723

## TERMS AND CONDITIONS OF SALE

### 1. INTRODUCTION

The following defining terms are used in these conditions:-

“Auction”	Means any auction conducted by Clarke and Simpson Auctions Ltd. either at the premises owned by them or elsewhere (including any internet-based auction);
“Auctioneer”	Means Clarke and Simpson Auctions Ltd. authorised auctioneer as appropriate together with any on-line platform;
“Bidder”	Means a bidder at an auction, including the bidders personally present at the venue and those bidding by commission bid, telephone or over the internet or otherwise;
“Buyer”	Means the bidder whose bid was the last bid when the auctioneer concludes the bidding;
“Conditions”	Means these Terms and Conditions of Sale;
“Hammer Price”	Means the level of bidding reached (at or above any reserve) when the auctioneer brings the bidding to a close;
“Lot”	Means any property accepted by Clarke and Simpson Auctions Ltd. for offer at auction;
“Vendor”	Means the seller of any lot offered by auction;

### 2. DESCRIPTION

No warranty is given or implied by the description in the catalogue. Each lot is sold in its condition at the time of sale with all faults, defects, imperfections and errors of description (if any). Where books are offered, they have not been collated and not subject to return. Whilst every endeavour has been made to describe the items adequately and properly, the buyer shall deem to have inspected the lot at time of purchase in person. All catalogues, condition reports and sellers and buyers' guides are for information only and do not form part of the contract.

### 3. STATUTORY REQUIREMENTS

Buyers will be deemed to have satisfied themselves prior to purchasing regarding current legal requirements (e.g. Health & Safety at Work Act) and it is expressly brought to the bidder's attention that equipment in the sale may not necessarily comply with such regulations. Any buyer shall satisfy himself as to any statutory requirement for the use of any item and no liability shall rest with the vendors nor the Auctioneers.

### 4. THE AUCTION

All auctions are conducted at the absolute discretion of the auctioneer. The auctioneer shall conduct the auction with reasonable skill and care. The vendor reserves the right to sell subject to reserve price in respect of all lots. What constitutes a bid shall be at the absolute discretion of the auctioneer, acting with appropriate skill and care. The auctioneer shall have the right to refuse any bid in all cases but most notably when such a bid does not exceed the previous bid by at least 10% or such a proportion as the auctioneer shall in his absolute discretion direct. Where two or more bids at the same level are simultaneously received by the auctioneer, the auctioneer at his absolute discretion shall determine which bid to prefer. Subject to the foregoing where two or more bids are at the same level are simultaneously received by the auctioneer, the bid submitted in the room shall take preference over a bid submitted by telephone or internet at the same level. Any bid made or attempted by telephone or over the internet will only be deemed to have been made if received by the auctioneer. The auctioneer reserves the right to withdraw, consolidate or divide any lot or lots or submit them in any order that they desire. The auctioneer has the right at his absolute discretion to refuse admission to his premises or attendance at (or participation in) any auction by any person. In the case of any dispute, the auctioneer shall be sole arbitrator in any matters arising during or out of the sale.

### 5. BIDDERS

All bidders will be required to register their particulars, bidders attending in person and those accompanying them will be required to provide photo ID and separate confirmation of address prior to viewing or taking any part of the sale and before entering any part of the premises to view. All bidders accept full liability for all bids submitted. Subject to the clause in this document headed “The Auction”, the highest bidder at the close of bidding shall be the buyer. Any dispute about a bid shall be settled at the auctioneer's absolute discretion.

Bidders are all deemed to act as principles unless there is prior written acknowledgement by Clarke and Simpson Auctions Ltd. that a bidder is acting as an agent for a named principle. Bidders are strongly encouraged to attend the auction in person. The bidders shall be responsible for any decision to bid for a particular lot and shall be deemed to have carefully inspected and satisfied themselves as to condition, neither Clarke and Simpson Auctions Ltd., their employees or agents shall be responsible for any neglect or default in doing or failing to do so. Bidders will be given ample opportunity to view and inspect before the sale and they must satisfy themselves as to all matters.

### 6. DEFAULT

Clarke and Simpson Auctions Ltd. shall act as agent of the vendor only. Any contracts for the sale of a lot shall be formed between the vendor and the buyer. As agent, only Clarke and Simpson Auctions Ltd. shall not be responsible for default by the vendor or the buyer. If any lot is not paid for in full and taken away in accordance with these conditions, or there is any other breach of the conditions, then Clarke and Simpson Auctions Ltd. as agents for vendor shall at its absolute discretion and without prejudice to any other rights it may have, be entitled to exercise all or any of the following rights and remedies:-

- 6.1 to proceed against the buyer for any action of debt or damages for breach of contract;
- 6.2 to rescind the sale of that lot or lots sold by Clarke and Simpson Auctions Ltd. to a defaulting buyer;
- 6.3 to resell the lot (by auction or private treaty) in which case the defaulting buyer shall be responsible for any resulting deficiency in the total amount due (after crediting any part payment and adding any resale costs), any possible surplus so arising shall belong to the vendor;
- 6.4 to remove, store and ensure the lot at the expense of the defaulting buyer and, in the case of storage, the location of such storage shall be at Clarke and Simpson Auctions Ltd. discretion;
- 6.5 to charge interest at a rate not exceeding 2% per month of the total amount due to the extent that it remains unpaid for more than five working days after the sale;
- 6.6 to retain any lot sold to the defaulting buyer until the buyer pays the total amount due;
- 6.7 to reject or ignore bids from the defaulting buyer at future auctions or to impose conditions before any such bids are accepted;
- 6.8 to apply any proceeds of sale for any other lots due or in the future becoming due to the defaulting buyer towards the settlement of the total remaining due.

### 7. INDEMNITIES, PENALTIES AND LIMITATIONS OF LIABILITY

Buyers shall pay for any damage done by themselves or their agents during the removal of their lots. Attendance at the sale shall be at the risk of those attending in respect of both them and to their goods and vehicles.

Any indemnity under these conditions will extend to all actions, costs, expenses, claims and demand whatsoever suffered or incurred by the person entitled to the benefit of it and Clarke and Simpson Auctions Ltd. declare themselves to be a trustee of the benefit of such indemnity so far as it is expressed to be the benefit of its employees and agents.

Whilst Clarke and Simpson Auctions Ltd. endeavour to ensure that the information on their websites is correct, they do not warrant the accuracy and completeness of the material on their or any website. Also, Clarke and Simpson Auctions Ltd. can make changes to the material on their or any website, or alter the products and prices described on it, at any time without notice. The material on the website(s) may be out of date, Clarke and Simpson Auctions Ltd. make no commitment to update such material. All material on the website(s) is provided “as is” without any conditions, warranties or other terms at any time. Accordingly, to the maximum extent permitted by law, the website(s) is provided to all parties on the basis that Clarke and Simpson Auctions Ltd. exclude all representations, warranties, conditions and other terms which, but for this legal notice, might have effect in relation to the website(s).



## 8. ELECTRICAL SAFETY REGULATIONS

All electrical lots are subject to electrical safety regulations and fall within "The Low Voltage Electrical Equipment (Safety) Regulations 1989" – all items have been PAT tested for safety but are not guaranteed to be in working order.

## 9. GENERAL MATTERS

Any notice to any buyer, vendor, bidder or viewer may be given by first class mail or email in which case it shall be deemed to have been received by the addressee forty-eight hours after posting or sending. All notices to Clarke and Simpson Auctions Ltd. must be sent in writing and email is not acceptable. Any indulgence extended to any person by Clarke and Simpson Auctions Ltd., notwithstanding the strict terms of these conditions or the terms of consignment, shall affect the position at the relevant time only and the respect of that particular concession only; in all other respects these conditions shall be construed as having full force and effect. These conditions and any disputes or claims arising out or in connection with them or their subject matter or formation (including non-contractual disputes or claims) are governed by and construed in accordance with the law of England. The parties irrevocably agree that the courts of England have exclusive jurisdiction to settle any dispute or claim that arises out of or in connection with the agreement or its subject matter or formation (including non-contractual disputes or claims).

## 10. PUBLICITY

Any catalogue and buyer and seller guides are provided for information only and do not form part of these conditions. The catalogue and the buyer and seller guides may contain additional terms and conditions. Clarke and Simpson Auctions Ltd. reserve the right to use any photographs, videos, background information and research for any publicity purposes before, during and after the sale.

## 11. THE PURCHASE PRICE AND PAYMENT ARRANGEMENTS

There is a buyer's premium of 20% plus VAT payable in respect of the sale. Any purchases made via one of the online portals shall be subject to an additional internet surcharge. The current rates being as follows:

Monday, Fine Art, Art Deco and Rural Bygones being 5% of the hammer price plus VAT (3% through [www.clarkeandsimpson.co.uk](http://www.clarkeandsimpson.co.uk)).  
Farm Machinery being 2% of the hammer price plus VAT.

Preferred payment is bank transfer, personal debit card or via the payment request from the on-line platform. No payment over £350 will be accepted by telephone. We do not accept cash, cheques, credit cards, business debit cards or international debit cards. Payment is due on the day of the sale, and no later than two working days following the day of sale. All money received will be held in Clarke & Simpson Auctions Ltd. Clients No 2 Account at Barclays Bank plc, Suffolk. Account Number 83428591. Sort Code 20 98 07. Clarke and Simpson Auctions Ltd. have no responsibility for any lot between the close of bidding and payment being made and subsequent collection. All payments from overseas buyers shall be made by Bank Transfer and bank fees paid in addition. Please note all policy regarding payment will be enforced and suitable arrangements must be made.

## 12. REMOVAL OF LOTS

The ownership of any lot purchased shall not pass to the relevant buyer until they have made payment in full to Clarke and Simpson Auctions Ltd.

The buyer shall be responsible for ensuring their purchases and at their own risk and expense take away any lot that they have purchased and paid for no later than five working days following the day of the auction.

Any lot which remains uncollected by the buyer, regardless of payment status, after 10 working days following the day of the auction shall be resold. These lots shall be sold on behalf of the buyer if paid for and all proceeds retained in lieu of storage or on behalf of the vendor if not paid for. Buyers will not be chased to collect during this period and collection is entirely their responsibility to arrange.

Removal of items from the room will be the responsibility of the buyer and they will be liable for any damage arising from the removal.

## 13. NUMBER BIDDING

This will be used for speed and efficiency as in all our sales. All parties wishing to bid must complete a registration form and register in the office on the view day or morning of sale to receive a number for bidding.

Please also note that photo ID and additional confirmation of address will be required.

## 14. ONLINE BIDDING

Clarke & Simpson Auctions Ltd. offer an online bidding service via [clarkeandsimpson.co.uk](http://clarkeandsimpson.co.uk), [the-saleroom.com](http://the-saleroom.com), [bidspotter.co.uk](http://bidspotter.co.uk) and [ibidder.com](http://ibidder.com) for those wishing to bid but cannot attend the sale.

In completing the bidder registration on [clarkeandsimpson.co.uk](http://clarkeandsimpson.co.uk), [the-saleroom.com](http://the-saleroom.com), [bidspotter.co.uk](http://bidspotter.co.uk) or [ibidder.com](http://ibidder.com) and providing your payment card details and, unless alternative arrangements are agreed with Clarke & Simpson Auctions Ltd.:

1. authorise Clarke & Simpson Auctions Ltd., if they so wish, to charge the payment card given in part or full payment, including all fees, for items successfully purchased in the auction via [clarkeandsimpson.co.uk](http://clarkeandsimpson.co.uk), [the-saleroom.com](http://the-saleroom.com), [bidspotter.co.uk](http://bidspotter.co.uk) or [ibidder.com](http://ibidder.com), and
2. confirm that you are authorised to provide these payment card details to Clarke & Simpson Auctions Ltd. Through [clarkeandsimpson.co.uk](http://clarkeandsimpson.co.uk), [the-saleroom.com](http://the-saleroom.com), [bidspotter.co.uk](http://bidspotter.co.uk) or [ibidder.com](http://ibidder.com) and agree that Clarke & Simpson Auctions Ltd. are entitled to ship the goods to the card holder name and card holder address provided in fulfilment of the sale.

Please note that any lots purchased through any of the online platforms will be subject to an additional internet surcharge: Monday, Fine Art, Art Deco and Rural Bygones being 5% of the hammer price plus VAT (3% through [www.clarkeandsimpson.co.uk](http://www.clarkeandsimpson.co.uk)). Farm Machinery being 2% of the hammer price plus VAT.

## 15. TELEPHONE BIDDING

We offer a telephone bidding service where possible at specialist sales, but this service can never be guaranteed. No applications for telephone bids will be accepted after the end of the viewing prior to sale day for any sale. All potential telephone bidders must provide a valid landline number and email address and agrees that they have read and understood the Terms and Conditions and satisfied themselves regarding any lot in accordance with these Terms and Conditions. No phone bids will be accepted for any lot with a lower guide figure of less than £250.

All those who wish to bid by telephone will be expected to deposit an amount determined by Clarke and Simpson Auctions Ltd. and not less than the minimum guide for all lots that they wish to bid upon into the Clients Account for Clarke and Simpson Auctions Ltd before the sale starts. This payment is not acceptable by card.

In the event of default, this sum shall be retained as part payment or any part may be retained to recover losses under clause 6 of these Terms and Conditions. We will expect payment of the balance owing by BACS on the following day, any payment not met within five working days will result in the forfeiture of the deposit paid.

## 16. AT FAULT (A.F.) LOTS

Certain lots are catalogued at fault (A.F.), damaged, restored etc., however the absence of any such notice does not imply that the piece is free from defects, nor does it indicate that other defects are not also present. Mention is not made of breakage, cracks, chips or any damage which can be noted by careful inspection, therefore those wishing to bid MUST, in all cases, be responsible for determining the condition of the lots themselves, either in person or by request of condition reports or additional detailed photographs.

## 17. ESTIMATES

Presale estimates are intended only as a guide for those wishing to bid, are given in good faith and subject to revision.

## 18. CONDITION REPORTS

Clarke and Simpson are unable to guarantee that requests for Condition Reports/images received will be responded to. Clarke and Simpson are happy to give a Condition Report where possible on the physical condition of goods, this will be provided on behalf of the vendor on the understanding that Clarke and Simpson are not entering into a contract with you in respect of the Condition Report and accordingly does not assume responsibility to you in respect of it. All lots are available for your own inspection or for inspection by an expert instructed by you, therefore these Condition Reports are for guidance only and all lots are sold "as found". Condition Reports do not form part of a contract.

## 19. COMMISSION BIDS

The auctioneers will be pleased to execute bids for those unable to attend the sale. Lots will be purchased at the lowest bid the room bidding, internet bidding or any reserves will allow. In the event of identical bids, the earliest bid received will take precedence. There must always be a maximum limit indicated. Buy or unlimited bids will not be accepted. Commission bids placed by telephone are accepted at the client's risk. We urge our clients to place such bids before the start of the sale. All such commissions are left entirely at the client's risk.

## 20. VALUE ADDED TAX

The symbol \* or V after any lot number or description indicates that Value Added Tax is payable by the buyer on the hammer price.

## 21. AUCTIONEERS MARGIN SCHEME

The Auctioneers Margin Scheme allows auctioneers to sell items without VAT on the hammer price. Under the margin scheme an amount equivalent to VAT at the current rate is added to the buyer's premium. This amount cannot be refunded. The VAT element will not be shown separately on the buyer's invoice. This VAT is not recoverable as Input Tax. We do not allow buyers to opt out of the margin scheme.

## 22. ATTRIBUTION OF PICTURES AND DRAWINGS

Every effort is made to ensure the accuracy of any statements as to authorship, attribution, origin, date, age, provenance and condition of any lot whether or not such statement forms part of the description of any such lot. Whether any such statement is made orally or in the catalogue it is an expression of opinion and not to be taken as being or implying any warranties or representations of facts by the auctioneers. Each buyer by making a bid for a lot acknowledges that he has satisfied himself fully as to the attribution and condition of the lot. The following is for guidance only and does not form part of a contract.

- A. The forename (s) (or full stops where not known) and surname of an artist indicates in our opinion a work by the artist.
- B. The initials of the forename (s) and the surname of the artist indicates in our opinion a work of the period of the artist which may be wholly or in part his work.
- C. The surname of the artist indicates in our opinion a work of the school or by one of the followers of the artist or in his style and of uncertain date.
- D. Signed, Dated, Inscribed indicated in our opinion work signed/dated/inscribed by the artist.
- E. Bears signature indicates in our opinion that this is not the signature of the artist.
- F. Attributed to may be used to denote a traditional attribution based on style.
- G. Manner of indicates in our opinion a work executed in the artist/craftman's style but of a later date.
- H. After indicates in our opinion a copy (of any date) of work of an artist or craftsman.

The addition of a question mark after any of the cataloguing terms above indicates an element of doubt.

## 23. DROIT DE SUITE ROYALTY CHARGES

All United Kingdom Art Market professionals (which includes auctioneers) are required to collect a royalty payment for all qualifying Works of Art. This applies to living artists and those who have died in the last 70 years.

All items in this catalogue that are marked "✓" are potentially qualifying items, and the royalty charge will apply if the hammer price is more than £1,000. The royalty charge will be added to purchase invoices and must be paid before items can be cleared. All royalty charges are paid to the design and Artists Copyright Society (DACS) by the auctioneers and no handling costs or additional fees with respect to these charges will be retained by the auctioneer. This charge may also be applicable to lots not marked "✓" and buyers must satisfy themselves.

The royalty charge for qualifying items which achieve a hammer price of more than £1,000, but less than £50,000 is 4%. For qualifying items that sell for more than £50,000 a sliding scale of royalty charges will apply. For a complete list of the royalty charges and threshold levels please refer to [www.dacs.org.uk](http://www.dacs.org.uk). There is no VAT payable on this royalty charge.

## 24. ENDANGERED SPECIES

Lots sold at auction may include endangered or other species of wildlife and plant life, for example, tortoiseshell, crocodile skin, whale bone, ebony or rosewood. Some countries restrict or prohibit import or export of objects containing these materials or require a licence/permit for their movement (e.g. a CITES Licence). Prior to bidding on a lot which may include these or similar materials, buyers must familiarise themselves with the relevant laws and regulations regarding their movement.

## 25. JEWELLERY

Gemstones are often treated to enhance colour and improve appearance. They may be heated or treated by oil or resin to intensify the colour and transparency. Other techniques like dyeing, irradiation, coating and impregnation can also be used. Buyers must be aware that unless the catalogue specifically states otherwise then the stone is natural, buyers must assume that any treatment may not be permanent, and that special care may be needed in the future.

## 26. EXPORT

Any lot purchased at auction may be subject to export restrictions and may require a licence for export out of the United Kingdom. The buyer is responsible for obtaining any licences that may be required (including any licence that may be required for import into the destination country) – any denial of such a licence will not be grounds for the buyer to cancel the purchase.

## 27. THIRD PARTY LIABILITY

All members of the public on Clarke and Simpson Auctions Ltd. premises are there at their own risk and must note the layout of the buildings and site and the appropriate security arrangements. Accordingly, neither the Auctioneer nor its employees or agents shall incur liability for death or personal injury (except as required by law) or similarly for the safety of persons visiting the premises.

## 28. CONSIGNMENT

All vendors will have received a copy of Clarke & Simpson Auctions Terms regarding consignment of lots for sale and these Terms and Conditions should be read in accordance with this consignment documentation.

*Entries Invited...*

Clarke &  
Simpson

*Militaria, Airguns  
& Firearms*



Saturday 12th April 2025

Closing date for entries 21st March 2024

*Live in the room and online*

BID ONLINE

**thesaleroom.com**

The home of art & antiques auctions

Clarke & Simpson Auctions, Suffolk  
01728 746 323 | [www.clarkeandsimpson.co.uk](http://www.clarkeandsimpson.co.uk)



Clarke & Simpson Auction Centre  
Campsea Ashe  
Nr. Wickham Market  
Suffolk IP13 0PS  
Tel: (01728) 746323  
Email: [auctions@clarkeandsimpson.co.uk](mailto:auctions@clarkeandsimpson.co.uk)  
[www.clarkeandsimpson.co.uk](http://www.clarkeandsimpson.co.uk)